


WAAS CH <b>93827</b> <b>W34A</b>	APP CRS <b>342°</b>	Rwy Idg TDZE Apt Elev	<b>6080</b> <b>620</b> <b>628</b>
--	------------------------	-----------------------------	---

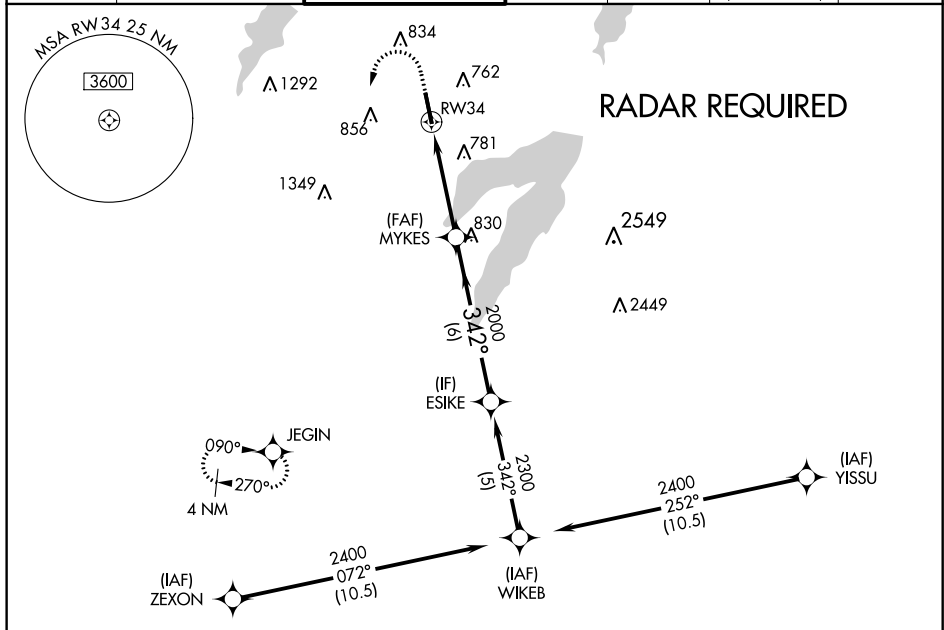
# RNAV (GPS) RWY 34

ARLINGTON MUNI (GKY)

**⚠** When local altimeter setting not received, use Grand Prairie Muni altimeter setting. For uncompensated Baro-VNAV systems, LNAV/VNAV NA below -16°C (4°F) or above 54°C (130°F). DME/DME RNP-0.3 NA. Inop table does not apply to LPV. For inop MALSR increase LNAV Cat A, B visibility to 1 mile.

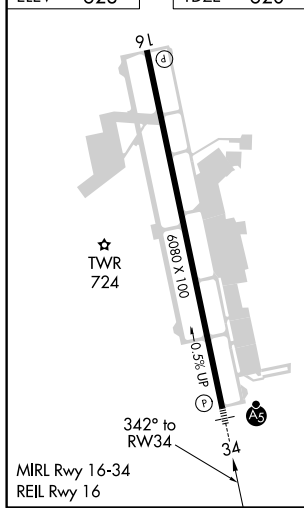
**MALSR**  **MISSED APPROACH:** Climb to 1100 then climbing left turn to 2800 direct JEGIN and hold.

ASOS <b>127.375</b>	REGIONAL APP CON <b>135.975 379.9</b>	ARLINGTON TOWER * <b>128.625</b>	GND CON <b>121.875</b>	CLNC DEL <b>121.875</b>	CLNC DEL <b>118.85</b> (When twr closed)	CTAF <b>128.625</b>
------------------------	--	-------------------------------------	---------------------------	----------------------------	--	------------------------

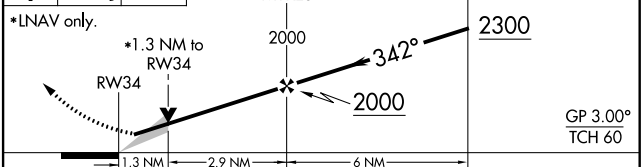


**RADAR REQUIRED**

ELEV 628	TDZE 620
----------	----------



1100 2800 JEGIN VGSI and RNAV glidepath not coincident (VGSI Angle 3.00/TCH 55).



CATEGORY	A	B	C	D
LPV DA	820- <sup>3</sup> / <sub>4</sub>	200 (200- <sup>3</sup> / <sub>4</sub> )		NA
LNAV/VNAV DA	1021- <sup>3</sup> / <sub>4</sub>	401 (400- <sup>3</sup> / <sub>4</sub> )		NA
LNAV MDA	1060- <sup>3</sup> / <sub>4</sub>	440 (500- <sup>3</sup> / <sub>4</sub> )		NA
CIRCLING	1100-1 472 (500-1)	1140-1 512 (600-1)	1220-1½ 592 (600-1½)	NA

SC-2, 09 SEP 2021 to 07 OCT 2021

SC-2, 09 SEP 2021 to 07 OCT 2021