

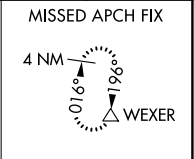
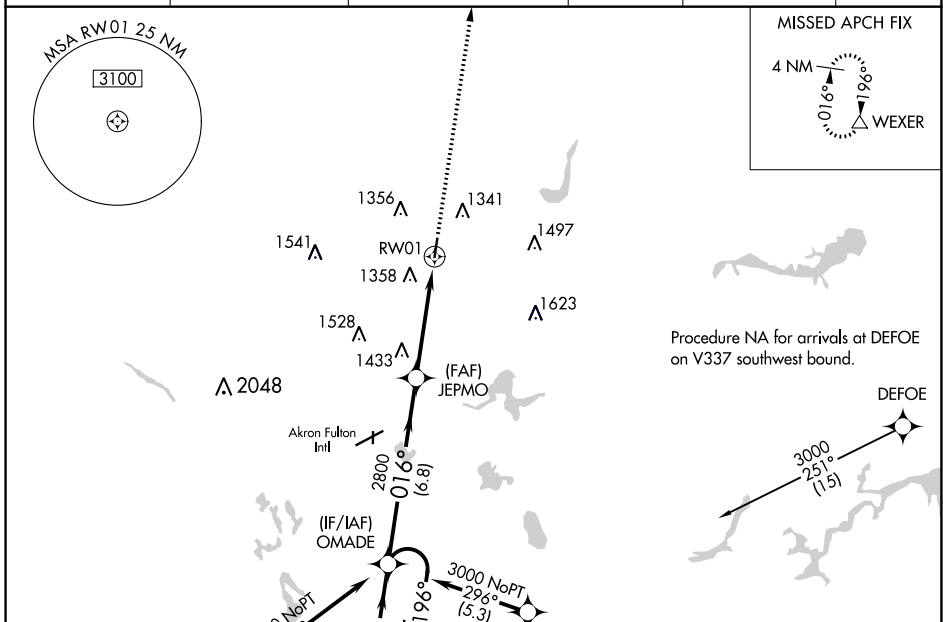
WAAS CH 61001 W01A	APP CRS 016°	Rwy Idg 3947 TDZE 1129 Apt Elev 1134
--	------------------------	---

RNAV (GPS) RWY 1

KENT STATE UNIVERSITY (1G3)

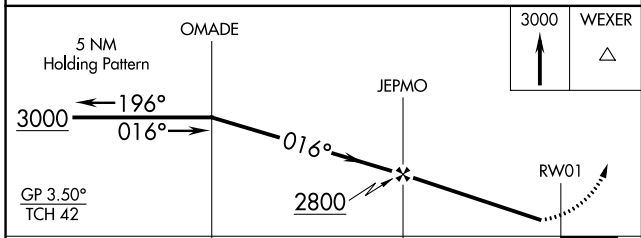
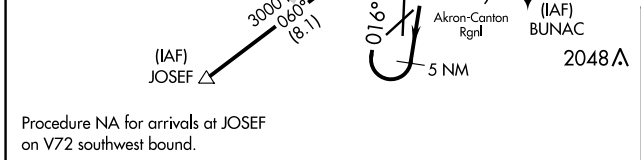
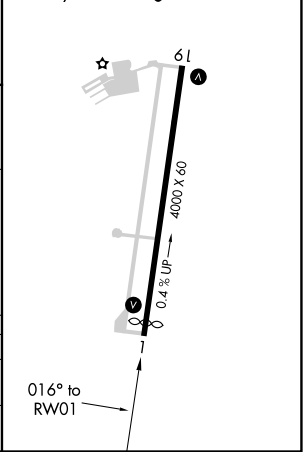
RNP APCH.		MISSED APPROACH: Climb to 3000 direct WEXER and hold.	
<p>▼ Rwy 1 helicopter visibility reduction below 3/4 SM NA. Use Akron Fulton Intl altimeter setting; when not received use Akron-Canton Rgnl altimeter setting and increase all DA/MDAs 20 feet.</p> <p>▲ NA</p>			

AWOS-2 119.15	AKR ASOS 126.825	CLEVELAND APP CON * 118.6 371.875	CLNC DEL 125.65	UNICOM 122.725 (CTAF)	122.9 ①
-------------------------	----------------------------	---	---------------------------	---------------------------------	----------------



ELEV 1134	TDZE 1129
-----------	-----------

MIRL Rwy 1-19 ①
REIL Rws 1 and 19 ①



CATEGORY	A	B	C	D
LPV DA	1499-1 370 (400-1)			NA
LNAV MDA	1760-1	631 (700-1)	1760-1 3/4 631 (700-1 3/4)	NA

EC-2, 09 SEP 2021 to 07 OCT 2021

EC-2, 09 SEP 2021 to 07 OCT 2021