

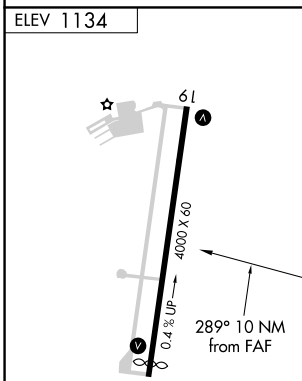
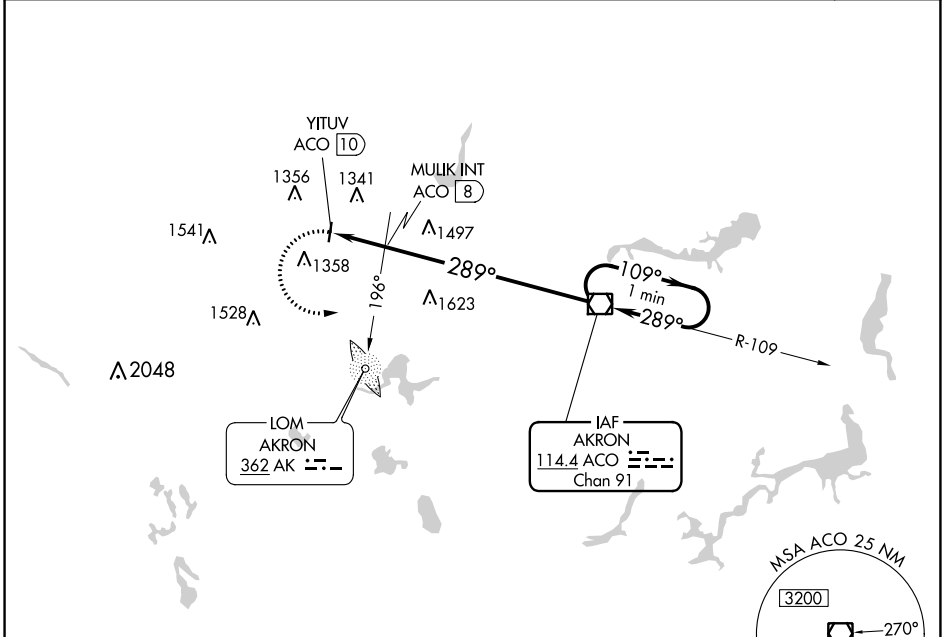
VOR/DME ACO 114.4 Chan 91	APP CRS 289°	Rwy Idg TDZE N/A Apt Elev 1134
---	------------------------	---

VOR-A

KENT STATE UNIVERSITY (1G3)

<p>▼ Use Akron Fulton altimeter setting; when not received, ▲ NA use Akron-Canton Rgnl altimeter setting.</p>	<p>MISSED APPROACH: Climbing left turn to 3000 direct ACO VOR/DME and hold.</p>
---	---

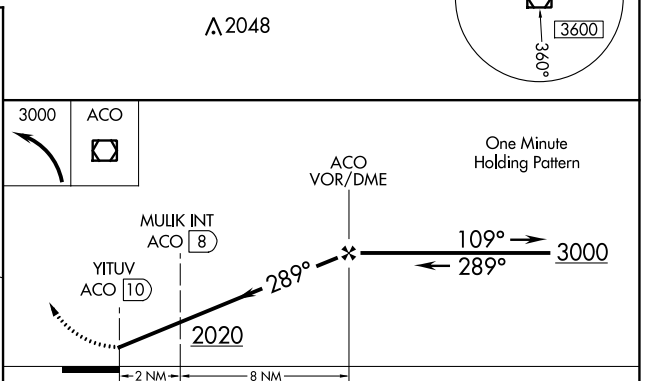
AWOS-2 119.15	AKR ASOS 126.825	CLEVELAND APP CON * 118.6 371.875	CLNC DEL 125.65	UNICOM 122.725 (CTAF)	122.9 0
-------------------------	----------------------------	---	---------------------------	---------------------------------	----------------



MIRL Rwy 1-19 (1) REL Rwys 1 and 19 (1)

FAF to MAP 10 NM

Knots	60	90	120	150	180
Min:Sec	10:00	6:40	5:00	4:00	3:20



CATEGORY	A	B	C	D
CIRCLING	2020-1¼	886 (900-1¼)	2020-2¾ 886 (900-2¾)	NA
MULIK FIX MINIMUMS (ADF OR DME REQUIRED)				
CIRCLING	1760-1	626 (700-1)	1760-1¾ 626 (700-1¾)	NA

VOR-A

EC-2, 09 SEP 2021 to 07 OCT 2021

EC-2, 09 SEP 2021 to 07 OCT 2021