

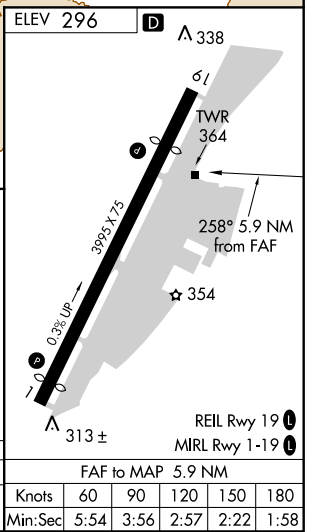
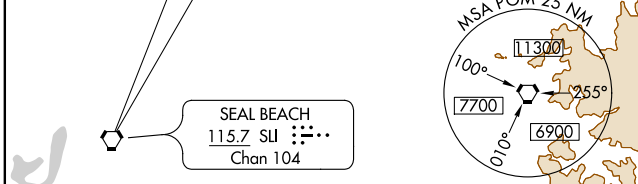
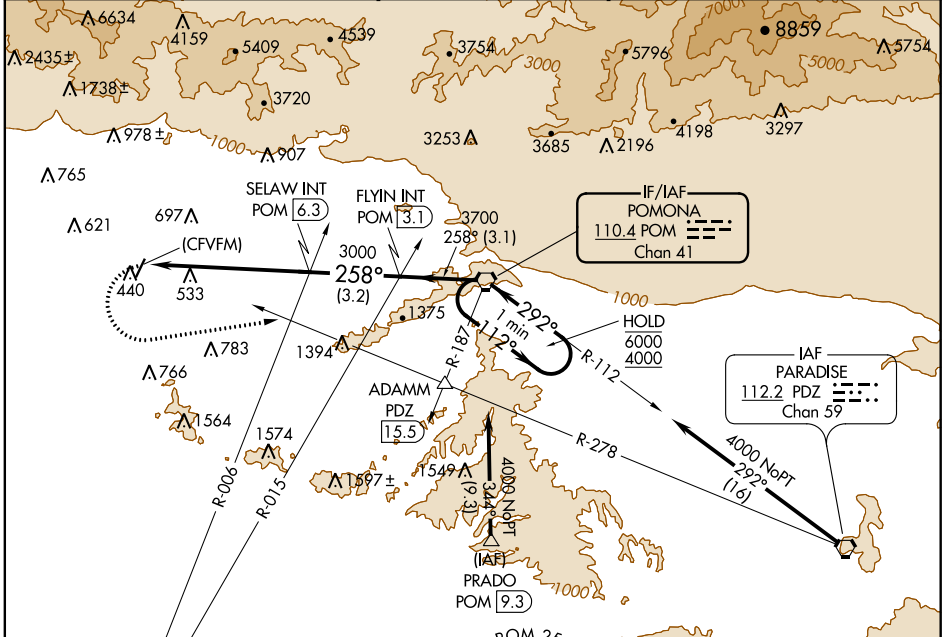
VORTAC POM 110.4 Chan 41	APP CRS 258°	Rwy Idg TDZE Apt Elev N/A N/A 296
---------------------------------------	------------------------	---

VOR-A
SAN GABRIEL VALLEY (EMT)

⚠ Circling Rwy 1 NA at night. When local altimeter setting not received, use Ontario Int'l altimeter setting and increase all MDA 160 feet.

⚠ MISSED APPROACH: Climbing left turn to 2500 on heading 070° and PDZ VORTAC R-278 to ADAMM INT/PDZ 15.5 DME then continue climb to 4000 to PDZ VORTAC.

ATIS 118.75	SOCAL APP CON 125.5 318.2	EL MONTE TOWER ★ 121.2 (CTAF) 0	GND CON 125.9	UNICOM 122.95
-----------------------	-------------------------------------	---	-------------------------	-------------------------



2500 hdg 070°	PDZ R-278	ADAMM △	4000 ↑	PDZ ⬡
POM VORTAC One Minute Holding Pattern				
(CFVFM)	SELAW INT POM [6.3]	FLYIN INT POM [3.1]	112° → 6000	← 292° 4000
	3000	3700		
	5.9 NM	3.2 NM	3.1 NM	

CATEGORY	A	B	C	D	FAF to MAP 5.9 NM					
ⓐ CIRCLING	1280-1¼ 984 (1000-1¼)	1280-1½ 984 (1000-1½)	1280-3 984 (1000-3)	1320-3 1024 (1100-3)	Knots	60	90	120	150	180
					Min:Sec	5:54	3:56	2:57	2:22	1:58

SW-3, 09 SEP 2021 to 07 OCT 2021

SW-3, 09 SEP 2021 to 07 OCT 2021