

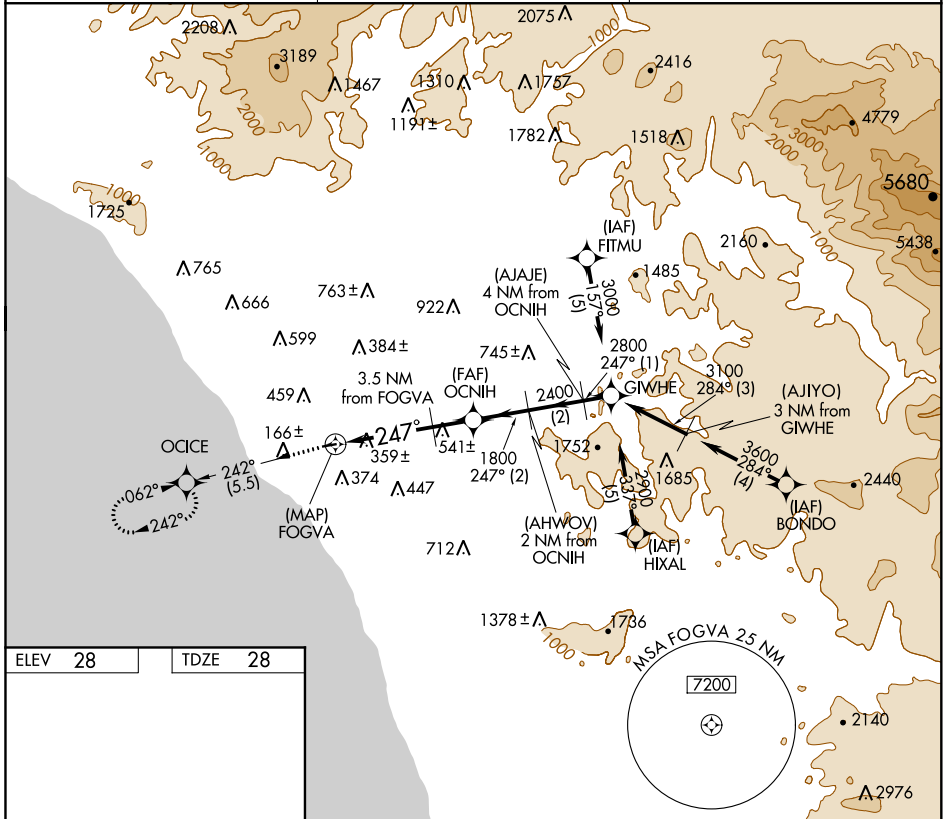
APP CRS 247°	Rwy Idg 2712
	TDZE 28
	Apt Elev 28

GPS RWY 24

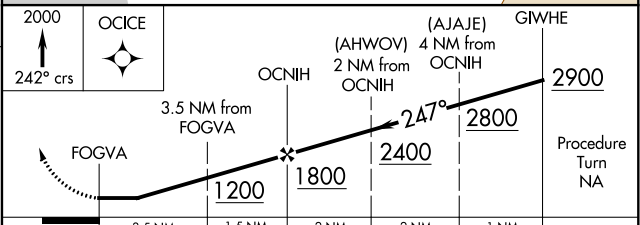
BOB MAXWELL MEML AIRFIELD (OKB)

NA Night Landing: Rwy 6 NA.	MISSED APPROACH: Climb to 2000 via 242° course to OCICE WP and hold.
-----------------------------	--

ASOS 127.8	SOCAL APP CON 127.3 323.0	UNICOM 122.725 (CTAF) 0
----------------------	-------------------------------------	-----------------------------------



ELEV 28	TDZE 28
MIRL Rwy 6-24 REIL Rwy 24	



CATEGORY	A	B	C	D
S-24	740-1	712 (800-1)		NA
CIRCLING	880-1 852 (900-1)	880-1½ 852 (900-1½)		NA

SW-3, 09 SEP 2021 to 07 OCT 2021

SW-3, 09 SEP 2021 to 07 OCT 2021