

VOR/DME CNU 109.2 Chan 29	APP CRS 161°	Rwy Idg TDZE Apt Elev	5001 901 901
---	------------------------	-----------------------------	---

VOR RWY 17

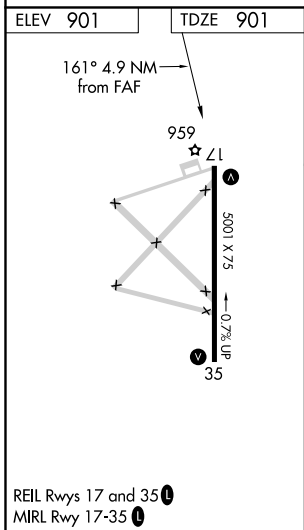
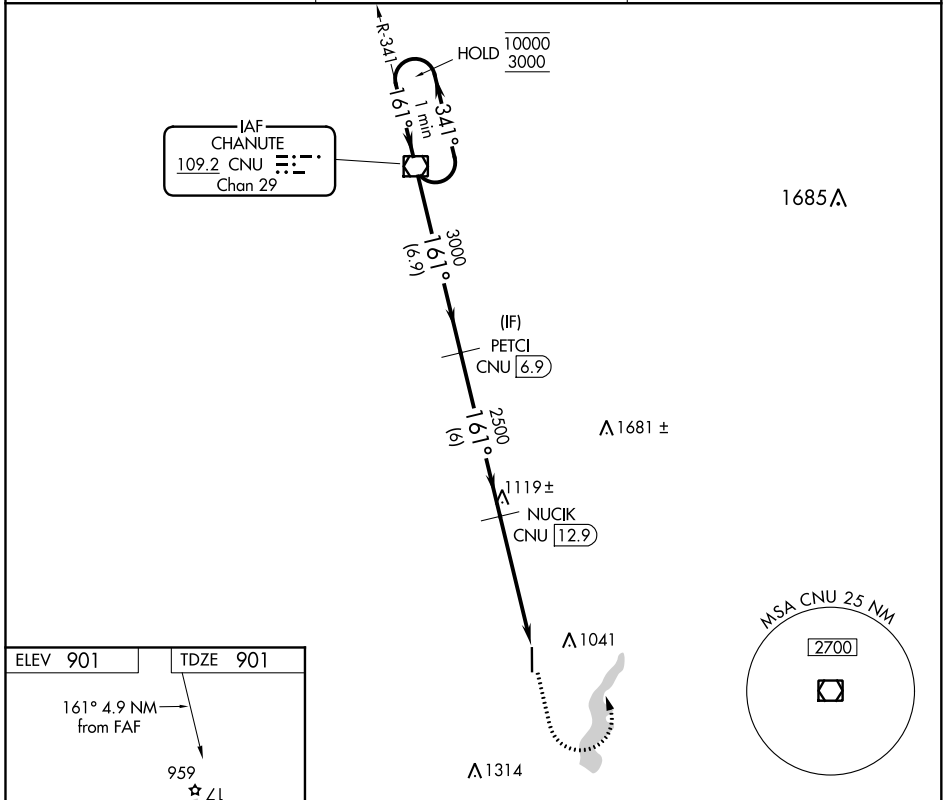
TRI-CITY (PPF)

DME required

- Procedure NA at night.
- Rwy 17 helicopter visibility reduction below 1 SM NA.

MISSED APPROACH: Climb to 1600 then climbing left turn to 3000 direct CNU VOR/DME and hold.

ASOS 118.175	KANSAS CITY CENTER 132.9 279.5	UNICOM 123.0 (CTAF)
------------------------	--	-------------------------------



One Minute Holding Pattern	CNU VOR/DME	PETCI CNU 6.9	1600	3000	CNU
	1000 3000	161°	161°	3000	NUCIK CNU 12.9
			2500	3.03° TCH 35	CNU 17.8
		6.9 NM	6 NM	4.9 NM	
CATEGORY	A	B	C	D	
S-17	1380-1	479 (500-1)	1380-1 3/8 479 (500-1 3/8)	NA	
CIRCLING	1380-1	479 (500-1)	1380-1 1/2 479 (500-1 1/2)	NA	

NC-2, 09 SEP 2021 to 07 OCT 2021

NC-2, 09 SEP 2021 to 07 OCT 2021