

WAAS CH 93828 W09A	APP CRS 094°	Rwy Idg TDZE Apt Elev	3882 779 781
--	------------------------	-----------------------------	---

RNAV (GPS) RWY 9

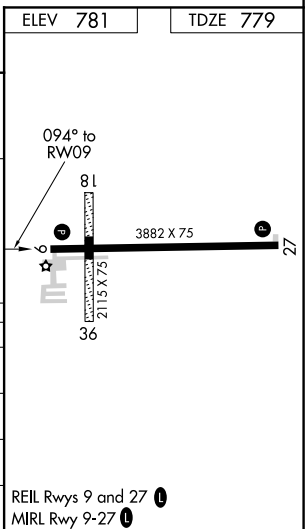
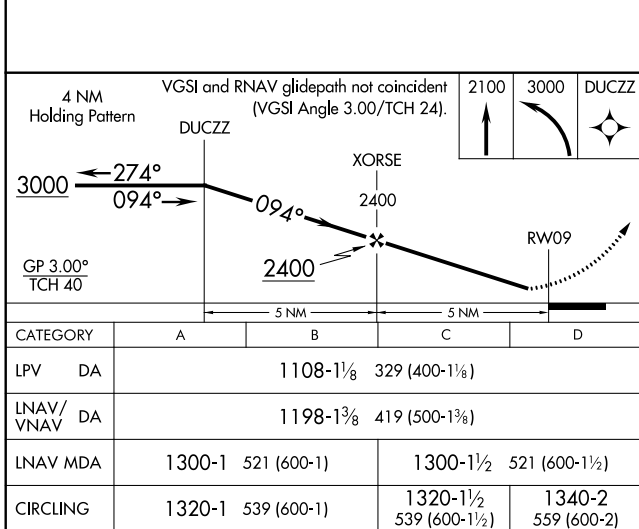
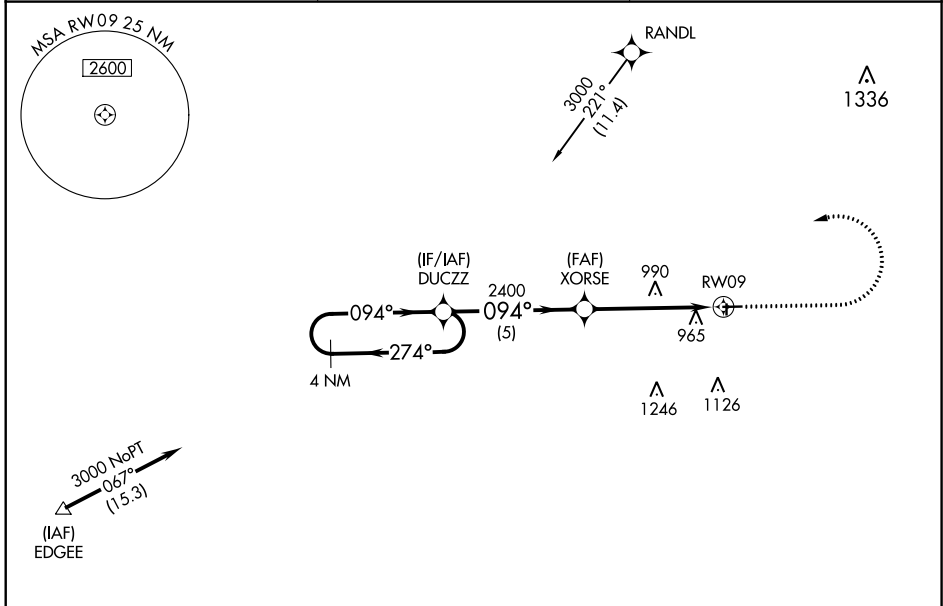
FULTON COUNTY (USE)

RNP APCH.

▼ For uncompensated Baro-VNAV systems, procedure NA below -16°C or above 54°C.
 Circling Rwy 18, 36 NA at night. Rwy 9 helicopter visibility reduction below 1 SM NA.
 Straight-in Rwy 9 and Circling Rwy 9, 27 at night, operational VGSI required, remain on or above VGSi glidepath until threshold.

MISSED APPROACH:
 Climb to 2100 then climbing left turn to 3000 direct DUCZZ and hold.

AWOS-3P 127.375	TOLEDO APP CON 134.35 317.55	UNICOM 123.0 (CTAF) 0
---------------------------	--	---------------------------------



EC-2, 09 SEP 2021 to 07 OCT 2021

EC-2, 09 SEP 2021 to 07 OCT 2021