

WAAS CH 93922 W17A	APP CRS 172°	Rwy Idg TDZE Apt Elev	4305 1616 1616
----------------------------------------	------------------------	-----------------------------	-------------------------------------------

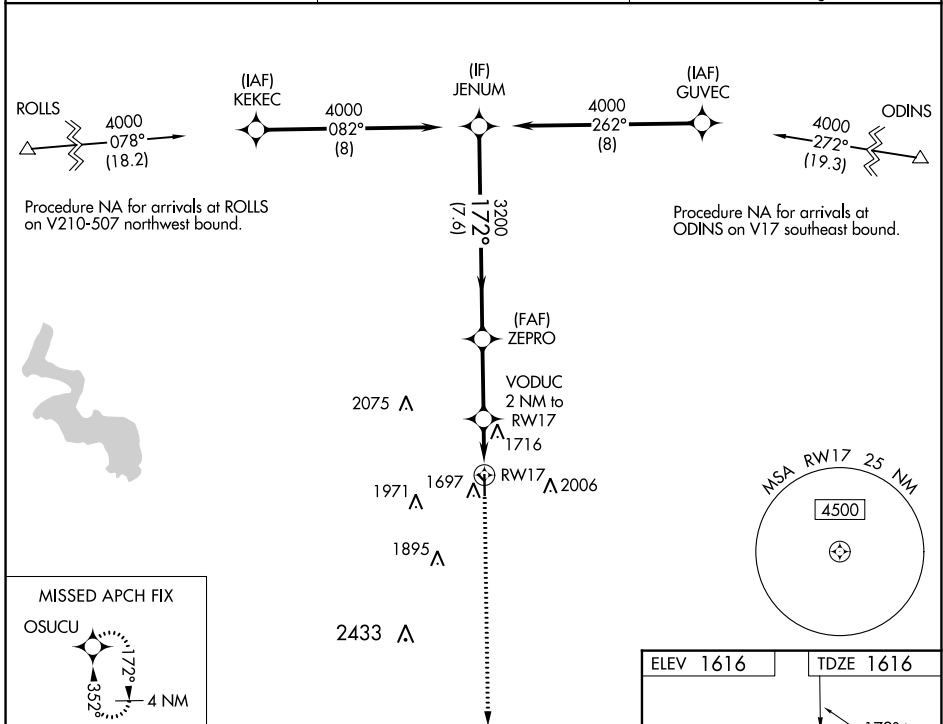
RNAV (GPS) RWY 17

CLINTON RGNL (CLK)

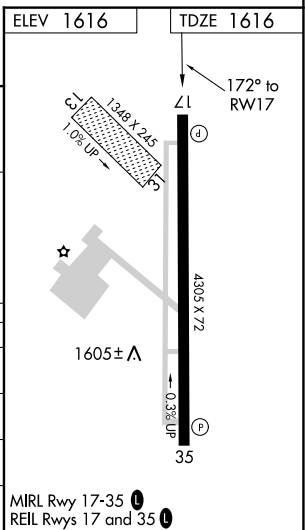
⚠ DME/DME RNP-0.3 NA. For uncompensated Baro-VNAV systems, LNAV/VNAV NA below -12°C (11°F) or above 54°C (130°F). Circling NA to Rwy 13 and 31. When local altimeter setting not received, use Weatherford altimeter setting; Increase DA to 1898 and all visibilities ½ mile; increase all MDA 40 feet and visibility Cat C ¼ mile. Baro-VNAV and VDP NA when using Weatherford altimeter setting.

MISSED APPROACH: Climb to 4000 direct OSUCU and hold.

AWOS-3 119.225	FORT WORTH CENTER 128.4 269.37	UNICOM 122.8 (CTAF) 0
--------------------------	------------------------------------------	---------------------------------



	JENUM	ZEPRO	VODUC 2 NM to RW17	4000 OSUCU
	4000	3200	*2280	*LNAV only.
	GP 3.00° TCH 40	3200	*1 NM to RW17	RW17
	7.6 NM	2.9 NM	1 NM	1 NM
CATEGORY	A	B	C	D
LPV DA	1866-7/8	250 (300-7/8)		NA
LNAV/VNAV DA	1866-7/8	250 (300-7/8)		NA
LNAV MDA	1980-1	364 (400-1)		NA
CIRCLING	2100-1 484 (500-1)	2220-1 604 (700-1)	2320-2 704 (800-2)	NA



SC-1, 09 SEP 2021 to 07 OCT 2021

SC-1, 09 SEP 2021 to 07 OCT 2021