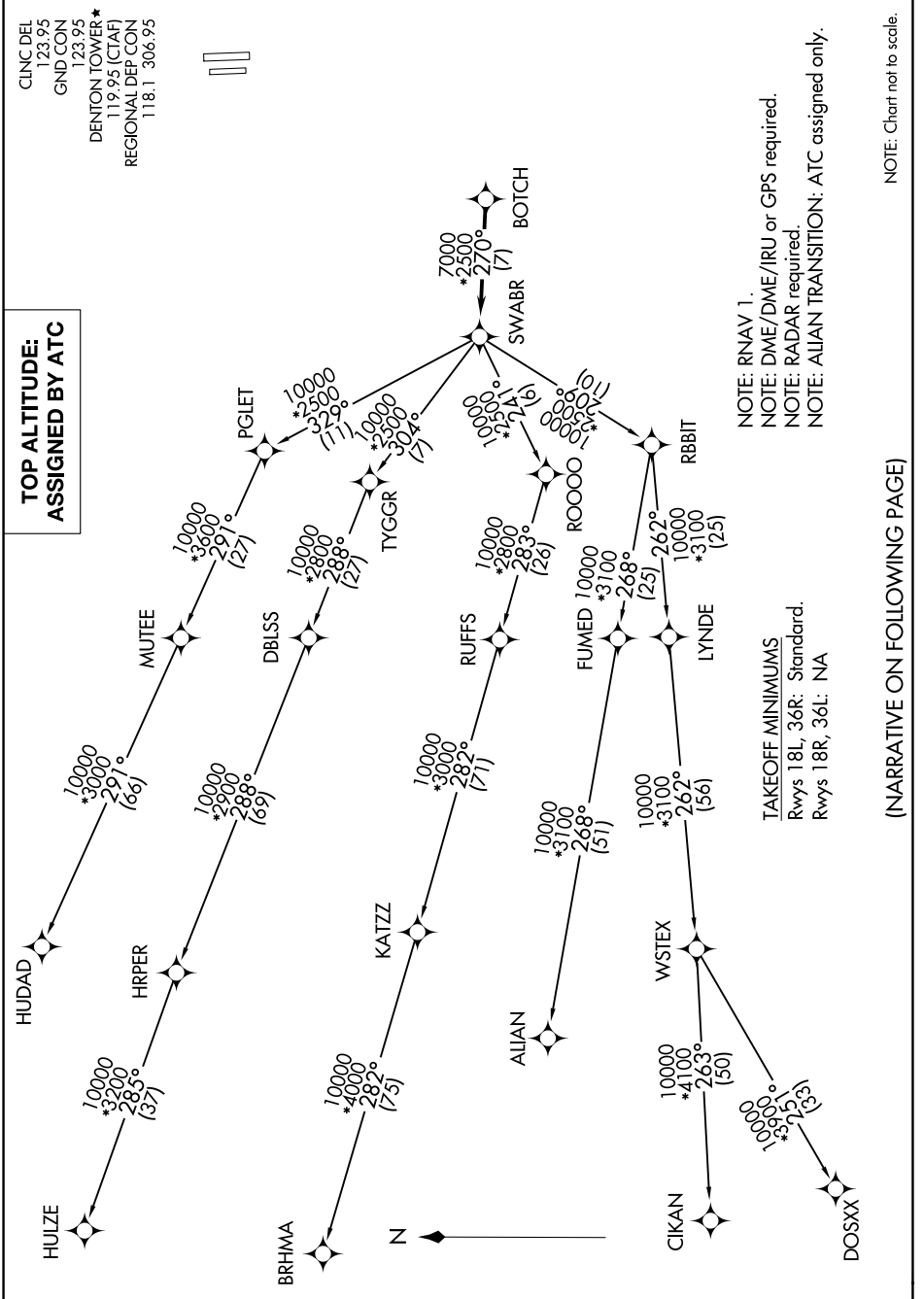


SWABR EIGHT DEPARTURE (RNAV)

SC-2, 09 SEP 2021 to 07 OCT 2021



NOTE: RNAV 1.
 NOTE: DME/DME/IRU or GPS required.
 NOTE: RADAR required.
 NOTE: ALIAN TRANSITION: ATC assigned only.

TAKEOFF MINIMUMS
 Rwy 18L, 36R: Standard.
 Rwy 18R, 36L: NA

NOTE: Chart not to scale.

(NARRATIVE ON FOLLOWING PAGE)

SC-2, 09 SEP 2021 to 07 OCT 2021