

WAAS CH 86732 W31A	APP CRS 314°	Rwy Idg TDZE Apt Elev	4600 1137 1137
--	------------------------	-----------------------------	---

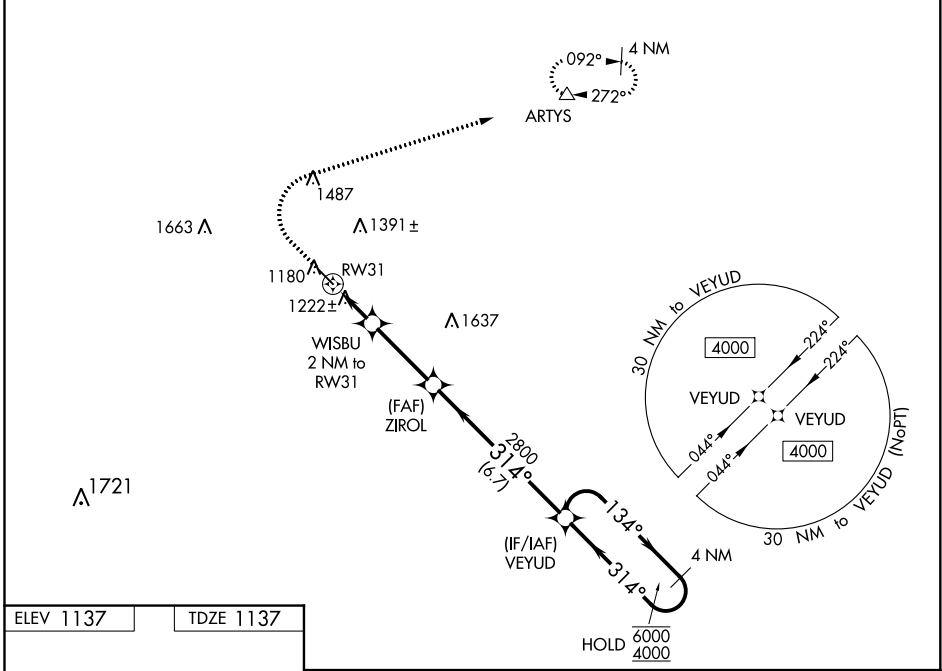
RNAV (GPS) RWY 31

IOWA FALLS MUNI (IFA)

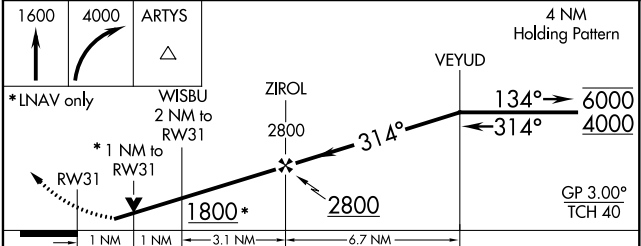
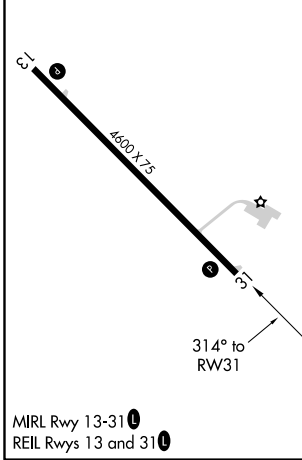
RNP APCH.
 ⚠ Rwy 31 helicopter visibility reduction below 3/4 SM NA.
 For uncompensated Baro-VNAV systems, LNAV/VNAV NA below -17°C or above 54°C.

MISSED APPROACH: Climb to 1600 then climbing right turn to 4000 direct ARTYS and hold, continue climb-in-hold to 4000.

AWOS-3 120.425	WATERLOO APP CON ★ 118.9	UNICOM 122.8 (CTAF) 0
--------------------------	------------------------------------	---------------------------------



ELEV 1137	TDZE 1137
-----------	-----------



CATEGORY	A	B	C	D
LPV DA		1387-1	250 (300-1)	
LNAV/VNAV DA		1387-1	250 (300-1)	
LNAV MDA		1480-1	343 (400-1)	
<input checked="" type="checkbox"/> CIRCLING	1540-1 403 (500-1)	1620-1 483 (500-1)	1760-1 3/4 623 (700-1 3/4)	1800-2 663 (700-2)

NC-3, 09 SEP 2021 to 07 OCT 2021

NC-3, 09 SEP 2021 to 07 OCT 2021