

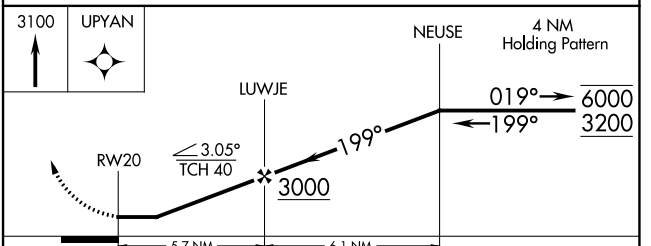
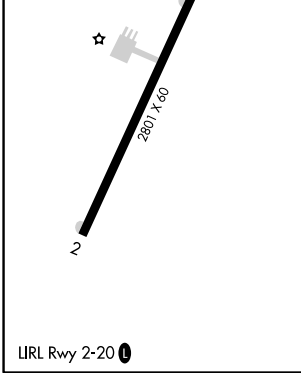
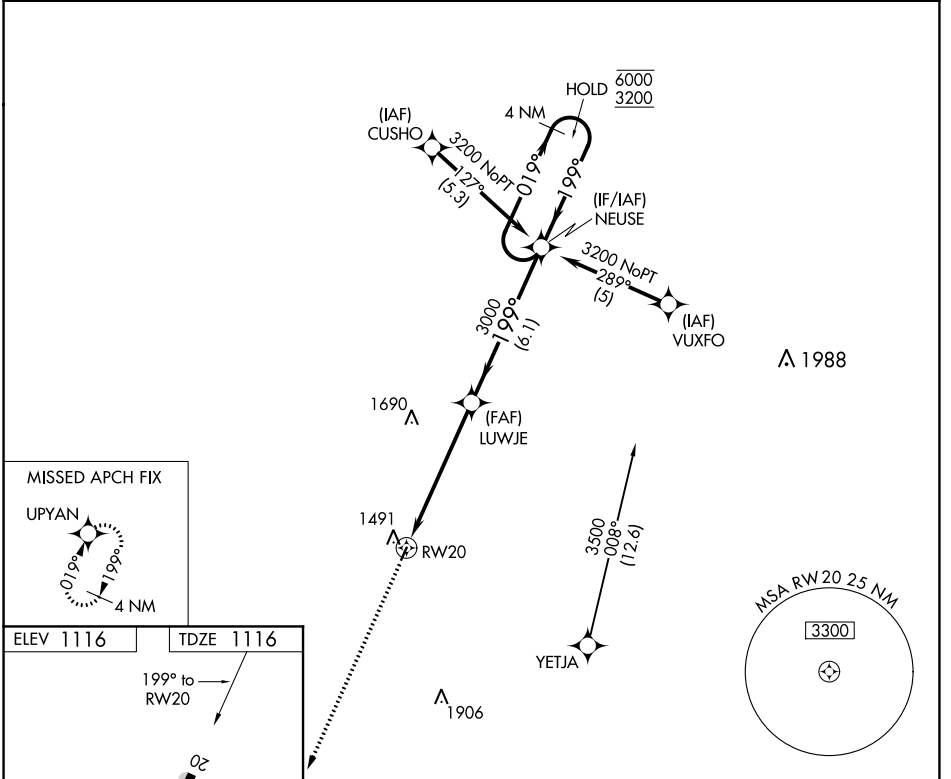
APP CRS	Rwy Idg	2801
199°	TDZE	1116
	Apt Elev	1116

RNAV (GPS) RWY 20

JAMES G WHITING MEML FLD (MEY)

RNP APCH.	MISSED APPROACH: Climb to 3100 direct UPYAN and hold.
<p>Procedure NA at night. Rwy 20 helicopter visibility reduction below 1 SM NA.</p> <p>Use Sioux City altimeter setting, when not received use Denison altimeter setting.</p>	

SUX ASOS 119.45	SIoux CITY APP CON★ 124.6 307.0	UNICOM 122.8 (CTAF) 0
---------------------------	---	---------------------------------



CATEGORY	A	B	C	D
LNNAV MDA	1920-1 804 (900-1)	1920-1¼ 804 (900-1¼)	NA	
CIRCLING	1920-1 804 (900-1)	1940-1¼ 824 (900-1¼)	NA	

NC-3, 09 SEP 2021 to 07 OCT 2021

NC-3, 09 SEP 2021 to 07 OCT 2021