

LOC/DME F-LVK 110.5 Chan 42	APP CRS 255°	Rwy ldg TDZE Apt Elev 5253 400 400
--	------------------------	--

ILS RWY 25R

LIVERMORE MUNI (LVK)

DME required.

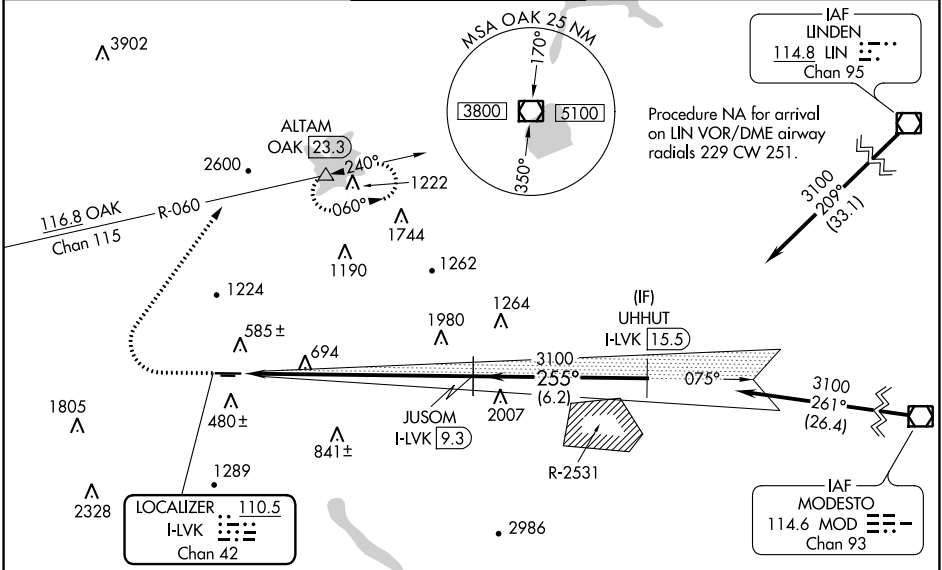
⚠

MALSRL

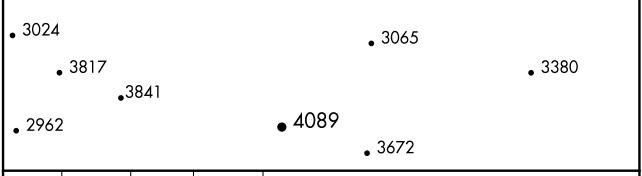
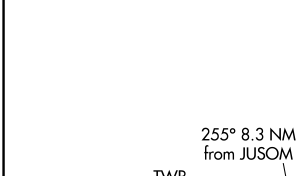
MISSED APPROACH: Climb to 1200 then climbing right turn to 5000 on heading 020° and OAK VOR/DME R-060 to ALTAM/OAK VOR/DME 23.3 DME and hold, continue climb-in-hold to 5000.

*Missed approach requires a minimum climb of 358 feet per NM to 3600, if unable to meet climb gradient, see LOC RWY 25R.

ATIS 119.65	NORCAL APP CON 123.85 278.3	LIVERMORE TOWER ★ 118.1(CTAF) 239.25	GND CON 121.6	UNICOM 122.95
-----------------------	---------------------------------------	--	-------------------------	-------------------------



ELEV 400	TDZE 400
----------	----------



1200	5000	OAK R-060	ALTAM	JUSOM I-LVK 9.3	UHHUT I-LVK 15.5
↑	hdg 020°	△		3100	3100
				255°	3100
				3100	GS 3.00° TCH 47
				8.3 NM	6.2 NM

CATEGORY	A	B	C	D
S-ILS 25R		600-½	200 (200-½)	

SW-2, 09 SEP 2021 to 07 OCT 2021

SW-2, 09 SEP 2021 to 07 OCT 2021