

WAAS CH 49140 W35A	APP CRS 354°	Rwy Idg TDZE 112 Apt Elev 112	6006
--	------------------------	---	-------------

RNAV (GPS) RWY 35

BROOKS COUNTY (BKS)

▼ For uncompensated Baro-VNAV systems, LNAV/VNAV NA below -15°C (5°F) or above 54°C (130°F). Circling Rwy 14 NA at night. DME/DME RNP-0.3 NA.

MISSED APPROACH: Climb to 3000 direct SALUM and hold.

AWOS-3
118.125

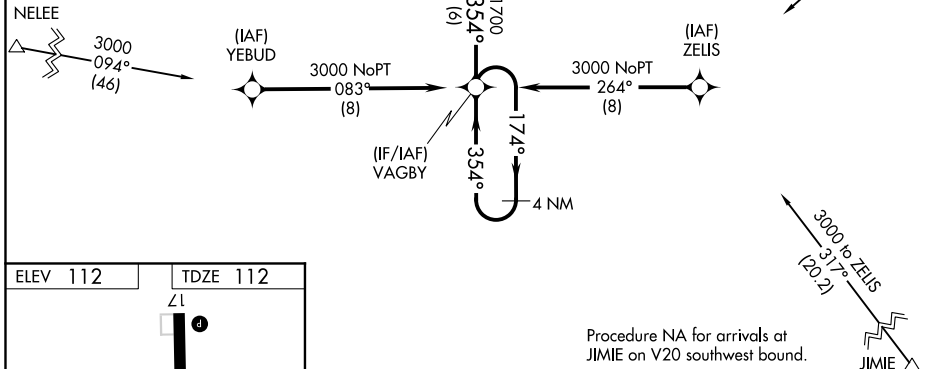
KINGSVILLE APP CON *
119.9 290.45

UNICOM
122.8 (CTAF) 0

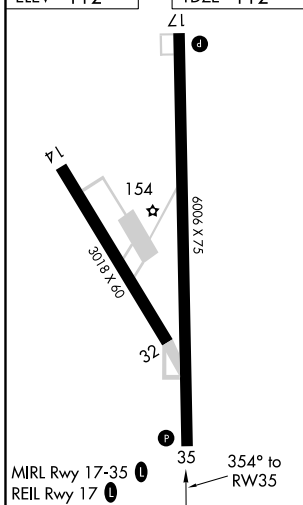
MISSED APCH FIX



Procedure NA for arrivals at NELEE via V17 northwest bound.



ELEV 112 TDZE 112



3000	SALUM	WAVUS 2.1 NM to RW35	VATSY 1700	VAGBY	4 NM Holding Pattern
*LNAV only - 0.9 NM to RW35		*820	354°	174° →	3000
0.9	1.2	2.8 NM	6 NM		GP 3.00° TCH 45
CATEGORY	A	B	C	D	
LPV DA		362-1	250 (300-1)		
LNAV/VNAV DA		362-1	250 (300-1)		
LNAV MDA		440-1	328 (400-1)		
<input checked="" type="checkbox"/> CIRCLING	580-1 468 (500-1)	680-1 568 (600-1)	940-2½ 828 (900-2½)	940-2¾ 828 (900-2¾)	

SC-3, 09 SEP 2021 to 07 OCT 2021

SC-3, 09 SEP 2021 to 07 OCT 2021