

WAAS CH <b>48918</b> <b>W35A</b>	APP CRS <b>355°</b>	Rwy Idg TDZE Apt Elev	<b>6800</b> <b>694</b> <b>699</b>
--	------------------------	-----------------------------	---

# RNAV (GPS) RWY 35

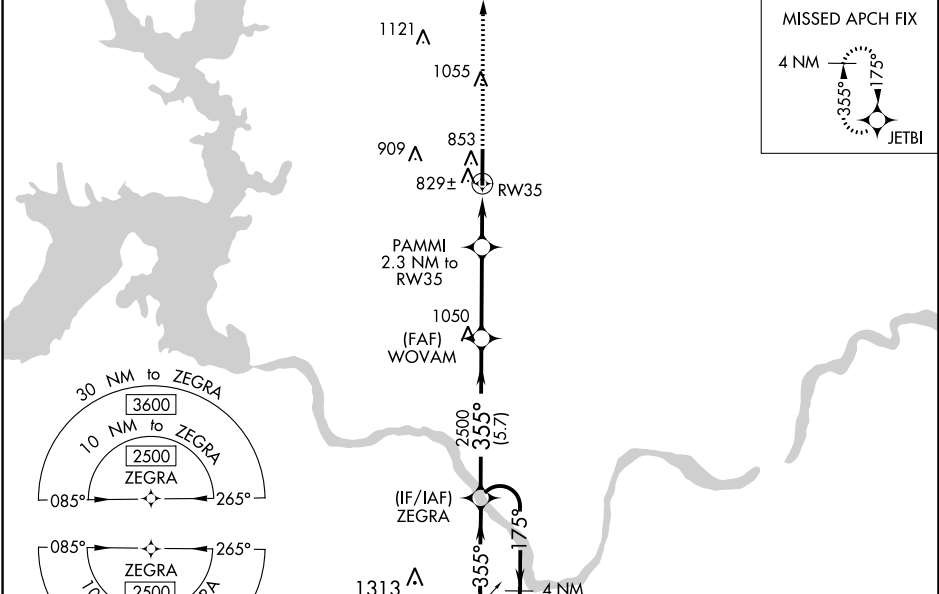
DURANT RGNL - EAKER FIELD (DUA)

RNP APCH.

**⚠** For uncompensated Baro-VNAV systems, LNAV/VNAV NA below -16°C or above 54°C.

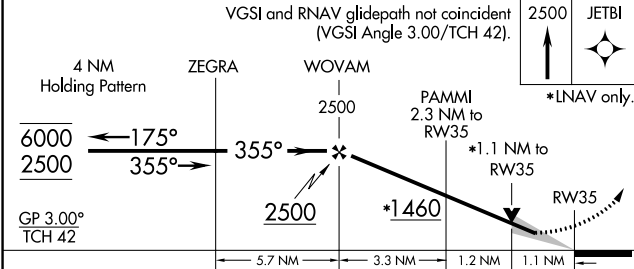
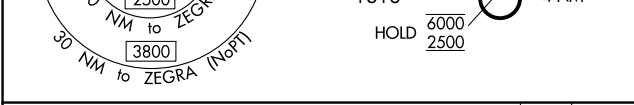
MISSED APPROACH: Climb to 2500 direct JETBI and hold.

AWOS-3 <b>124.175</b>	FORT WORTH CENTER <b>124.75 323.0</b>	UNICOM <b>122.8 (CTAF) 0</b>
--------------------------	--	---------------------------------



SC-1, 09 SEP 2021 to 07 OCT 2021

SC-1, 09 SEP 2021 to 07 OCT 2021



CATEGORY	A	B	C	D
LPV DA	894- <sup>3</sup> / <sub>4</sub>	200 (200- <sup>3</sup> / <sub>4</sub> )		NA
LNAV/VNAV DA	1086-1 <sup>1</sup> / <sub>8</sub>	392 (400-1 <sup>1</sup> / <sub>8</sub> )		NA
LNAV MDA	1080-1	386 (400-1)	1080-1 <sup>1</sup> / <sub>8</sub> 386 (400-1 <sup>1</sup> / <sub>8</sub> )	NA

