

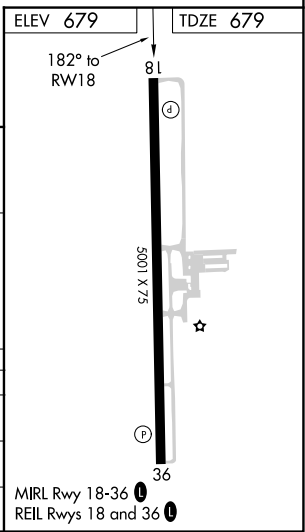
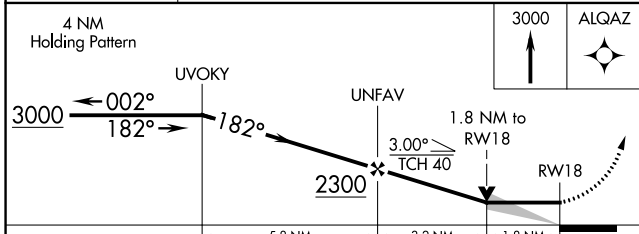
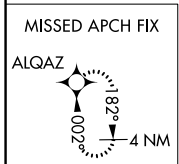
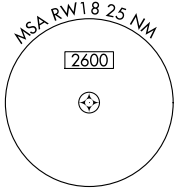
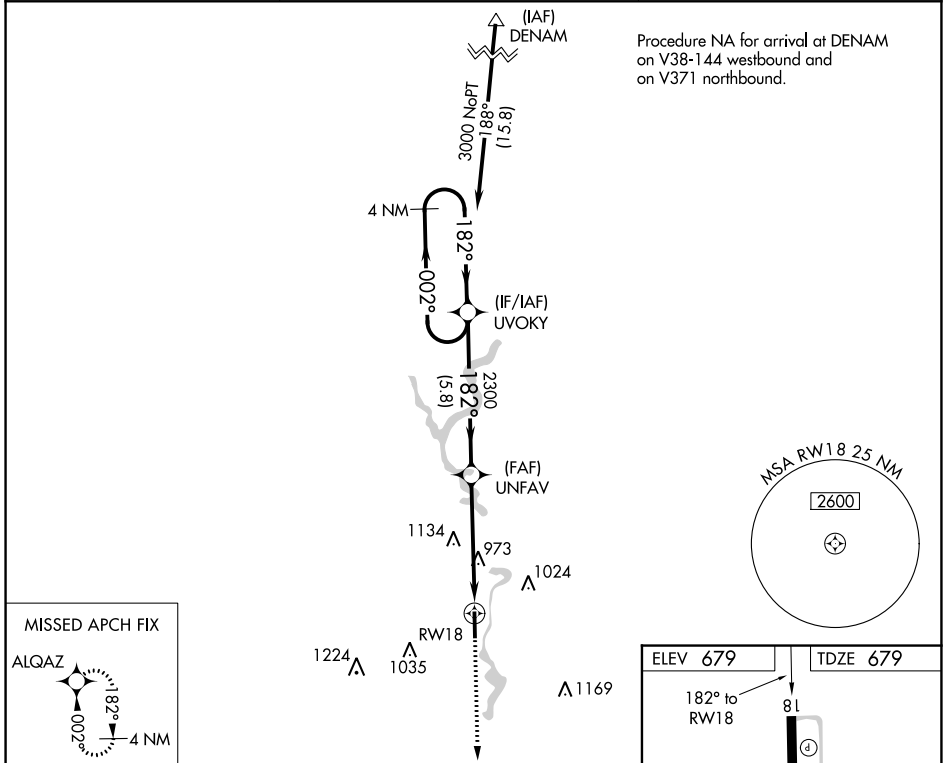
WAAS CH 70728 W18A	APP CRS 182°	Rwy Idg 5001 TDZE 679 Apt Elev 679
--	------------------------	---

RNAV (GPS) RWY 18

WHITE COUNTY (MCX)

▽ ▲	Circling Rwy 36 NA at night. DME/DME RNP-0.3 NA.	MISSED APPROACH: Climb to 3000 direct ALQAZ and hold.
----------------------	--	---

AWOS-3P 124.05	GRISSOM APP CON ★ 123.85 291.675	UNICOM 122.8 (CTAF) ①
--------------------------	--	--



CATEGORY	A	B	C	D
LP MDA	1280-1	601 (700-1)	1280-1¾	601 (700-1¾)
LNAV MDA	1440-1 761 (800-1)	1440-1¼ 761 (800-1¼)	1440-2½	761 (800-2½)
C CIRCLING	1440-1 761 (800-1)	1440-1¼ 761 (800-1¼)	1500-2½ 821 (900-2½)	1500-2¾ 821 (900-2¾)

EC-2, 09 SEP 2021 to 07 OCT 2021

EC-2, 09 SEP 2021 to 07 OCT 2021