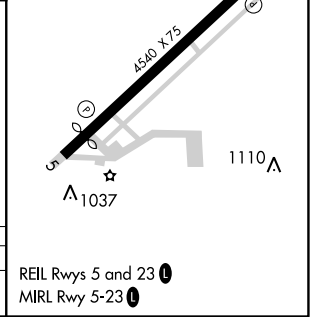
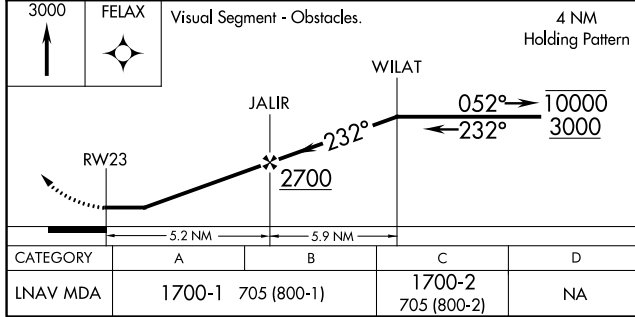
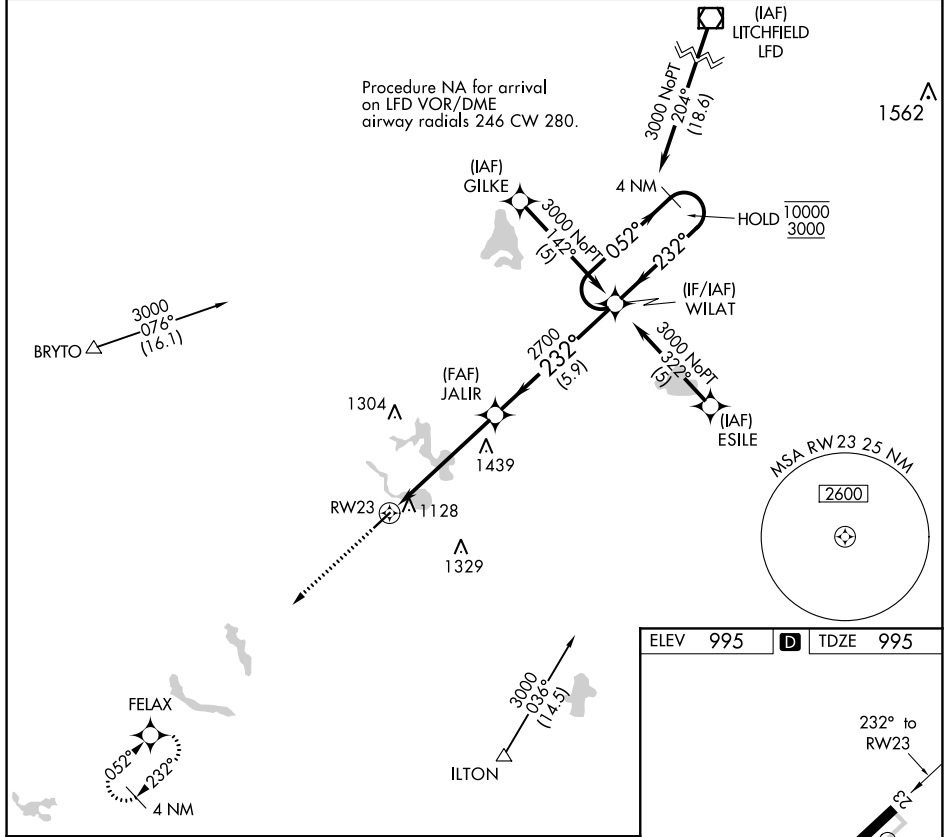


APP CRS	Rwy Idg	<b>4000</b>
<b>232°</b>	TDZE	<b>995</b>
	Apt Elev	<b>995</b>

# RNAV (GPS) RWY 23

TRI-STATE STEUBEN COUNTY (A.N.Q.)

RNP APCH.		MISSED APPROACH: Climb to 3000 direct FELAX and hold.
Rwy 23 helicopter visibility reduction below 1 SM NA. Procedure NA at night.		
AWOS-3 <b>118.175</b>	FORT WAYNE APP CON <b>127.2 284.6</b> (SW/NW) <b>132.15 284.6</b> (SE/NE)	UNICOM <b>123.075</b> (CTAF) <b>1</b>



CATEGORY	A	B	C	D
LNAV MDA	1700-1	705 (800-1)	1700-2 705 (800-2)	NA

REIL Rwy 5 and 23 **1**

MIRL Rwy 5-23 **1**