

APP CRS	Rwy Idg	<b>4000</b>
<b>052°</b>	TDZE	<b>990</b>
	Apt Elev	<b>995</b>

# RNAV (GPS) RWY 5

TRI-STATE STEUBEN COUNTY (ANQ)

RNP APCH.

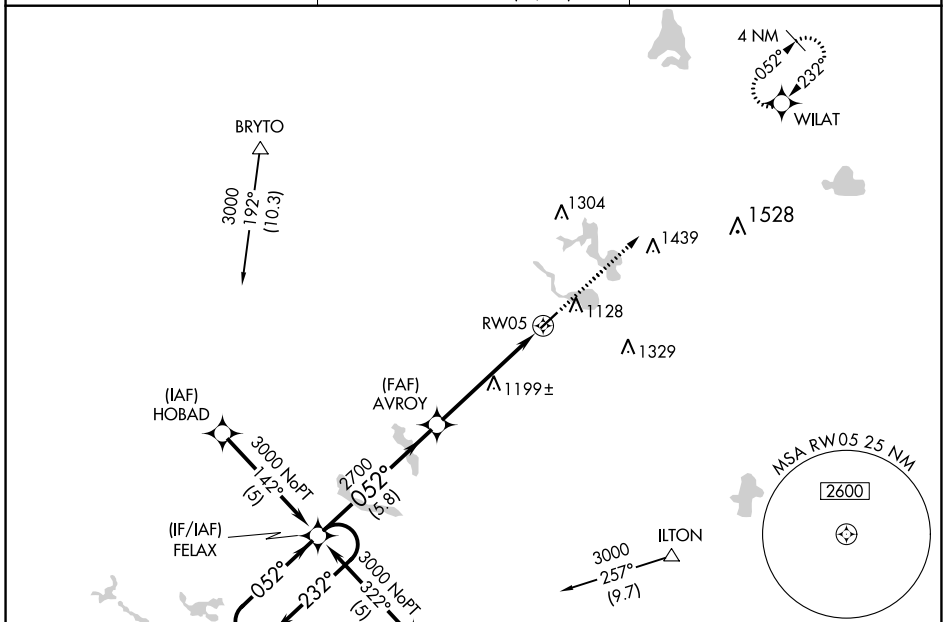
**▲ NA** For uncompensated Baro-VNAV systems, LNAV/VNAV NA below -16°C or above 54°C.  
Rwy 5 helicopter visibility reduction below 3/4 SM NA.

**MISSED APPROACH:**  
Climb to 3000 direct  
WILAT and hold.

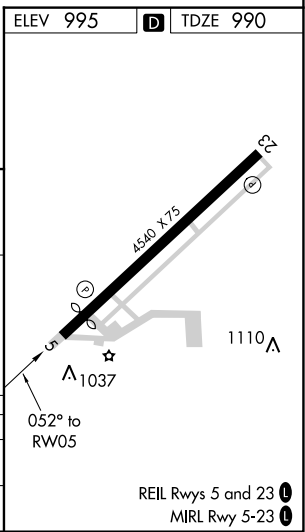
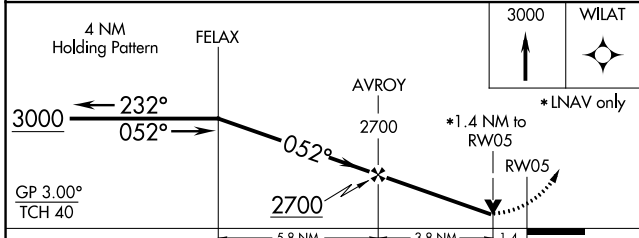
AWOS-3  
**118.175**

FORT WAYNE APP CON  
**127.2 284.6** (SW/NW)  
**132.15 284.6** (SE/NE)

UNICOM  
**123.075** (CTAF) **📻**



ELEV 995	<b>D</b> TDZE 990
----------	-------------------



CATEGORY	A	B	C	D
LNAV/VNAV DA	1474-1 3/4		484 (500-1 3/4)	NA
LNAV MDA	1460-1	470 (500-1)	1460-1 1/2 470 (500-1 1/2)	NA

EC-2, 09 SEP 2021 to 07 OCT 2021

EC-2, 09 SEP 2021 to 07 OCT 2021