

| | | |
|-------------|----------|-------------|
| APP CRS | Rwy Idg | 3558 |
| 229° | TDZE | 896 |
| | Apt Elev | 896 |

RNAV (GPS) RWY 23

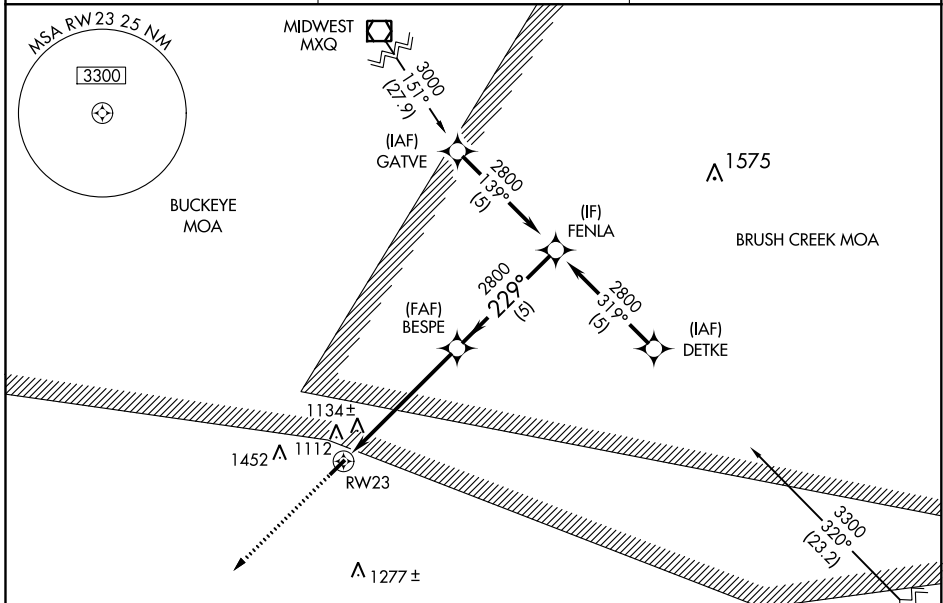
ALEXANDER SALAMON (A.M.T.)

RNP APCH.

Procedure NA at night. Rwy 23 helicopter visibility reduction below 1 SM NA.
 NA Use Flemingsburg, Kentucky altimeter setting.

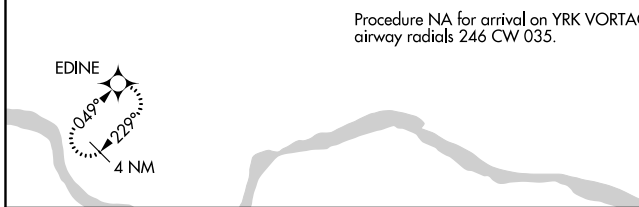
MISSED APPROACH: Climb to 2800 direct EDINE and hold.

| | | |
|------------------------------|---|---------------------------------|
| FGX AWOS-3 118.125 | INDIANAPOLIS CENTER 135.575 290.5 | UNICOM 122.8 (CTAF) 0 |
|------------------------------|---|---------------------------------|



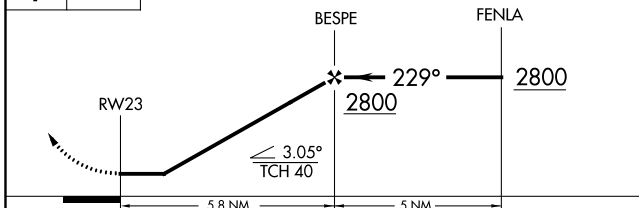
EC-2, 09 SEP 2021 to 07 OCT 2021

EC-2, 09 SEP 2021 to 07 OCT 2021

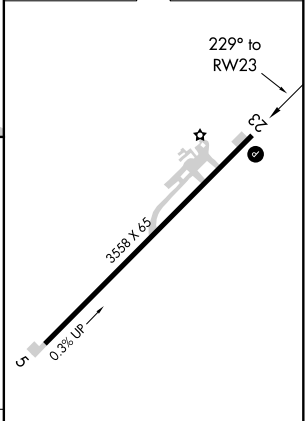


2800 EDINE

VGSI and descent angles not coincident (VGSI Angle 3.30/TCH 25).



| | |
|----------|----------|
| ELEV 896 | TDZE 896 |
|----------|----------|



| CATEGORY | A | B | C | D |
|----------|--------|-------------|-------------------------|----|
| LNAV MDA | 1440-1 | 544 (600-1) | 1440-1½ 544 (600-1½) | NA |

REIL Rwy 5 and 23 0

MIRL Rwy 5-23 0