

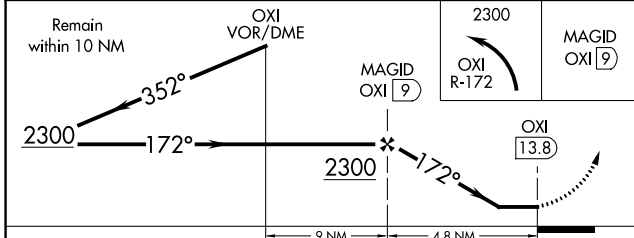
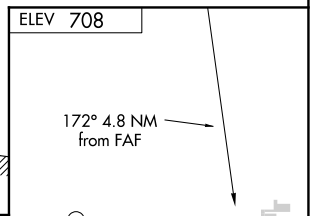
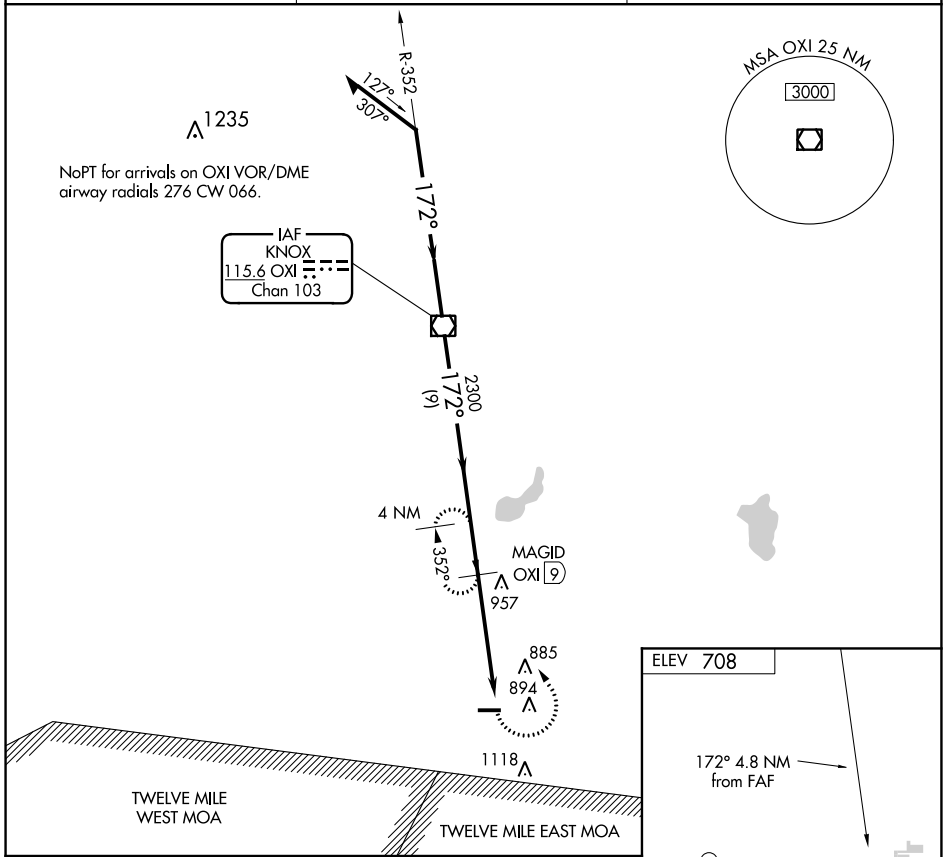
VOR/DME OXI 115.6 Chan 103	APP CRS 172°	Rwy Idg TDZE Apt Elev	N/A N/A 708
--	------------------------	-----------------------------	--

VOR/DME-A

ARENS FLD (RWN)

<p>▼ Use Knox altimeter setting; when not received, use Rochester altimeter setting and increase all MDA 20 feet.</p> <p>▲ NA</p>	<p>MISSED APPROACH: Climbing left turn to 2300 via OXI R-172 to MAGID/OXI 9 DME and hold.</p>
---	--

OXI AWOS-3 135.775	SOUTH BEND APP CON ★ 132.05 257.8	UNICOM 122.8 (CTAF) 0
------------------------------	---	--



CATEGORY	A	B	C	D	
C CIRCLING	1280-1	569 (600-1)	1480-2¼ 772 (800-2¼)	NA	REIL Rwy 9 and 27 0 MRL Rwy 9-27 0

EC-2, 09 SEP 2021 to 07 OCT 2021

EC-2, 09 SEP 2021 to 07 OCT 2021