

WAAS CH 78428 W08A	APP CRS 080°	Rwy Idg TDZE Apt Elev	4601 831 836
--	------------------------	-----------------------------	---

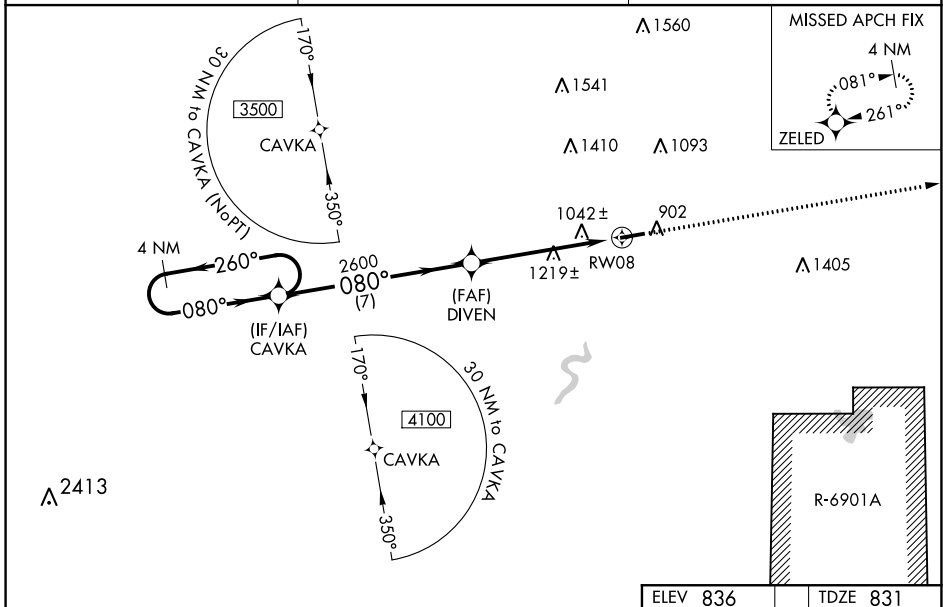
RNAV (GPS) RWY 8

BLACK RIVER FALLS AREA (BCK)

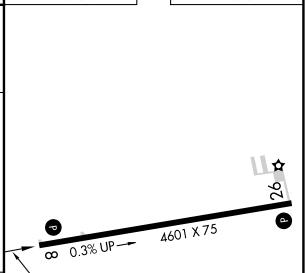
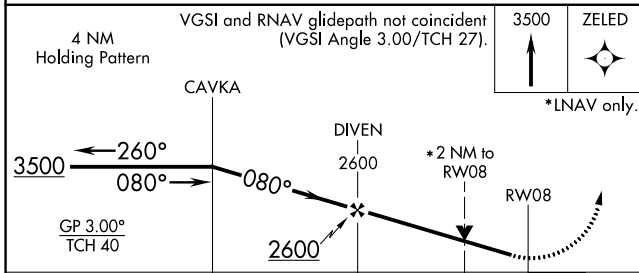
⚠ Baro-VNAV NA when using La Crosse altimeter setting. For uncompensated Baro-VNAV systems, LNAV/VNAV NA below -16°C (4°F) or above 38° C (100°F). DME/DME RNP-0.3 NA. Visibility reduction by helicopters NA. VDP NA with La Crosse altimeter setting. When local altimeter setting not received, use La Crosse altimeter setting and increase all DA 91 feet and all MDA 100 feet and increase LPV all Cats visibility to 1/8 mile, LNAV/VNAV all Cats to 2 1/4 mile, LNAV Cat B to 1 1/4 mile, Cat C/D to 2 mile, and Circling Cat B to 1 1/4 mile, Cat C to 2 1/4 mile, and Cat D to 2 1/2 mile.

MISSED APPROACH:
Climb to 3500 direct ZELED and hold.

AWOS-3PT 119.125	MINNEAPOLIS CENTER 128.6 363.0	CTAF 122.9
----------------------------	--	----------------------



ELEV 836	TDZE 831
----------	----------



CATEGORY	A	B	C	D
LPV DA		1081-7/8	250 (300-7/8)	
LNAV/VNAV DA		1350-13/4	519 (600-13/4)	
LNAV MDA	1480-1	649 (700-1)	1480-17/8	649 (700-17/8)
CIRCLING	1480-1	644 (700-1)	1480-17/8	1480-2
			644 (700-17/8)	644 (700-2)

REIL Rwy 8 and 26 **Ⓛ**
MIRL Rwy 8-26 **Ⓛ**

EC-3, 09 SEP 2021 to 07 OCT 2021

EC-3, 09 SEP 2021 to 07 OCT 2021