

YUMA PROVING GROUND, ARIZONA

# RNAV (GPS) RWY 6

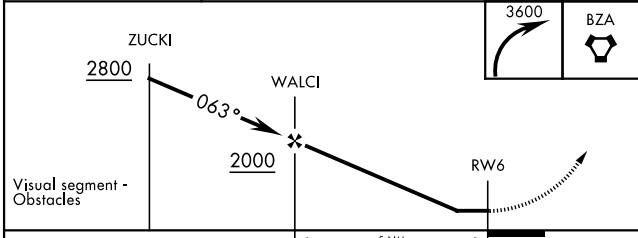
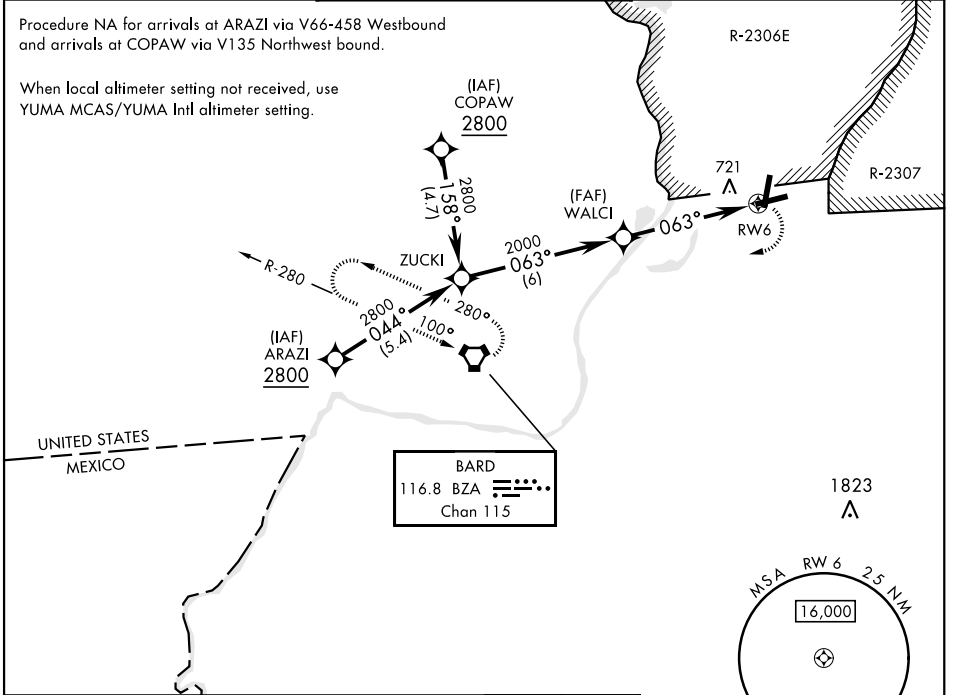
APCH CRS	Rwy Idg	6000
063°	TDZE	387
	Arprt Elev	433

AL-6341 [USA]

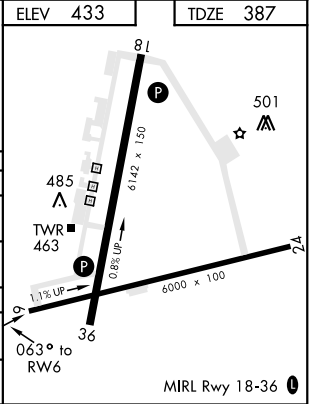
LAGUNA AAF (KLGf)

<b>▽</b> DME/DME RNP-0.3 NA	MISSED APPROACH: Climbing right turn to 3600 direct BZA VORTAC and hold.
<b>▲</b> NA Procedure NA when airfield closed.	

YUMA APP CON <b>124.7 374.8</b>	LAGUNA TOWER ★ <b>126.2 (CTAF) 242.175</b>	GND CON <b>121.8 0 229.4</b>
------------------------------------	---	---------------------------------



ELEV 433	TDZE 387
----------	----------



CATEGORY	A	B	C	D
LNVA MDA	1020-1	633 (600-1)	1020-1¾ 633 (600-1¾)	1020-2 633 (600-2)
CIRCLING	1080-1	647 (700-1)	1080-1¾ 647 (700-1¾)	1080-2 647 (700-2)
YUMA MCAS/YUMA Intl ALTIMETER SETTING				
LNVA MDA	1100-1	713 (700-1)	1100-2 713 (700-2)	1100-2¼ 713 (700-2¼)
CIRCLING	1160-1	727 (800-1)	1160-2 727 (800-2)	1160-2¼ 727 (800-2¼)

YUMA PROVING GROUND, ARIZONA

32°52'N-114°24'W

LAGUNA AAF (KLGf)

Orig A 17AUG17

# RNAV (GPS) RWY 6

SW-4, 09 SEP 2021 to 07 OCT 2021

SW-4, 09 SEP 2021 to 07 OCT 2021