

YUMA PROVING GROUND, ARIZONA

VOR RWY 6

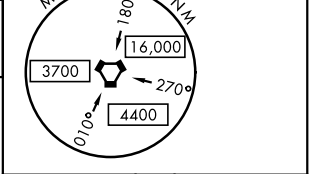
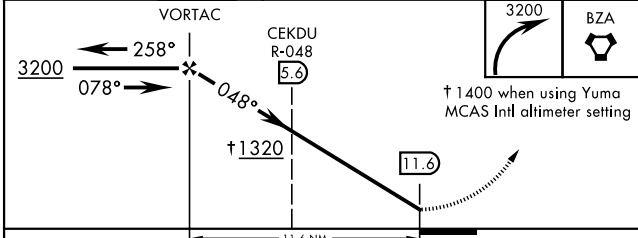
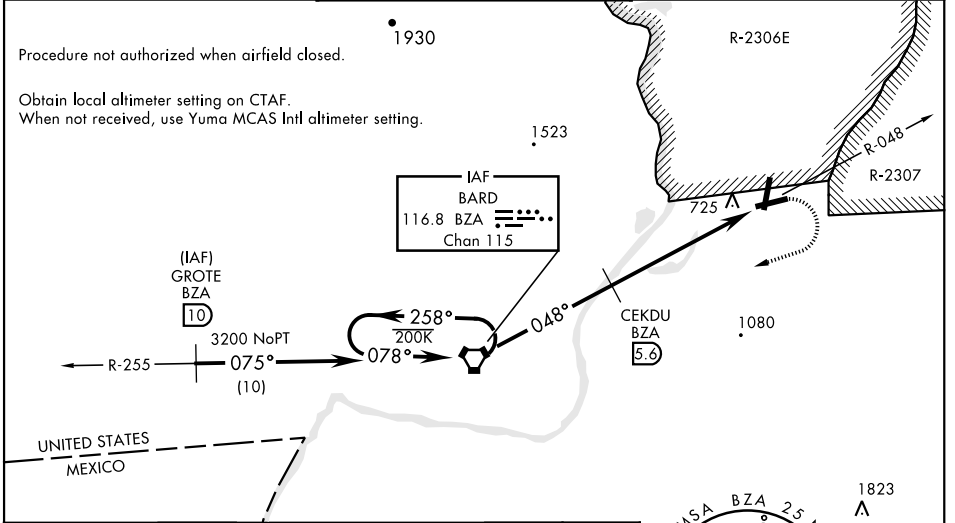
LAGUNA AAF (KLGf)

| | | |
|---|-------------------------|---|
| VORTAC BZA 116.8 Chan 115 | APCH CRS 048° | Rwy Idg TDZE Arpt Elev 6000 387 433 |
|---|-------------------------|---|

AL-6341 [USA]

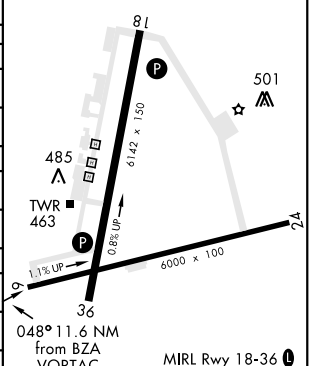
▼ * Straight-in minima not authorized at night.
▲ NA MISSED APPROACH: Climbing right turn to 3200 direct BZA VORTAC and hold.

| | | |
|------------------------------------|---|---------------------------------|
| YUMA APP CON 124.7 374.8 | LAGUNA TOWER ★ 126.2 (CTAF) 242.175 | GND CON 121.8 0 229.4 |
|------------------------------------|---|---------------------------------|



| CATEGORY | A | B | C | D |
|--|------------------------|------------------------|----------------------|----------------------|
| S-6 * | 1320-1¼ 933 (900-1¼) | 1320-2¾ 933 (900-2¾) | 1320-3 933 (900-3) | 1320-3 933 (900-3) |
| CIRCLING | 1320-1¼ 887 (900-1¼) | 1320-2¾ 887 (900-2¾) | 1320-3 887 (900-3) | 1320-3 887 (900-3) |
| DME MINIMA | | | | |
| S-6 * | 1040-1 653 (700-1) | 1040-1¾ 653 (700-1¾) | 1040-2 653 (700-2) | 1040-2 653 (700-2) |
| CIRCLING | 1080-1 647 (700-1) | 1080-1¾ 647 (700-1¾) | 1080-2 647 (700-2) | 1080-2 647 (700-2) |
| YUMA MCAS/YUMA Intl ALTIMETER SETTING | | | | |
| S-6 * | 1400-1¼ 1013 (1000-1¼) | 1400-1½ 1013 (1000-1½) | 1400-3 1013 (1000-3) | 1400-3 1013 (1000-3) |
| CIRCLING | 1400-1¼ 967 (1000-1¼) | 1400-1½ 967 (1000-1½) | 1400-3 967 (1000-3) | 1400-3 967 (1000-3) |
| YUMA MCAS/YUMA Intl ALTIMETER SETTING DME MINIMA | | | | |
| S-6 * | 1120-1 733 (700-1) | 1120-1¼ 733 (700-1¼) | 1120-2¼ 733 (700-2¼) | 1120-2½ 733 (700-2½) |
| CIRCLING | 1160-1 727 (800-1) | 1160-2 727 (800-2) | 1160-2¼ 727 (800-2¼) | 1160-2½ 727 (800-2½) |

| | |
|----------|----------|
| ELEV 433 | TDZE 387 |
|----------|----------|



| | | | | | |
|--------------------|-------|------|------|------|------|
| FAF to MAP 11.6 NM | | | | | |
| Knots | 60 | 90 | 120 | 150 | 180 |
| Min:Sec | 11:36 | 7:44 | 5:48 | 4:38 | 3:52 |

YUMA PROVING GROUND, ARIZONA
Amdt 6A 20142

32°52'N-114°24'W

LAGUNA AAF (KLGf)

VOR RWY 6

SW-4, 09 SEP 2021 to 07 OCT 2021

SW-4, 09 SEP 2021 to 07 OCT 2021