

|  |                        |   |             |
|--|------------------------|---|-------------|
| WAAS<br>CH <b>99428</b><br><b>W32A</b> | APP CRS<br><b>320°</b> | Rwy Idg<br>TDZE <b>1680</b><br>Apt Elev <b>1692</b> | <b>4301</b> |
|--|------------------------|---|-------------|

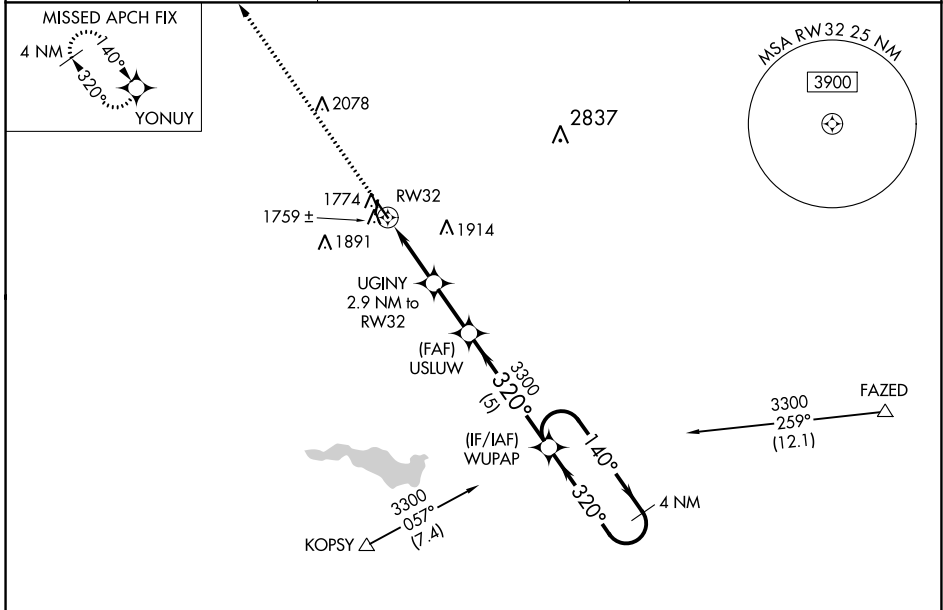
# RNAV (GPS) RWY 32

SUPERIOR MUNI (12K)

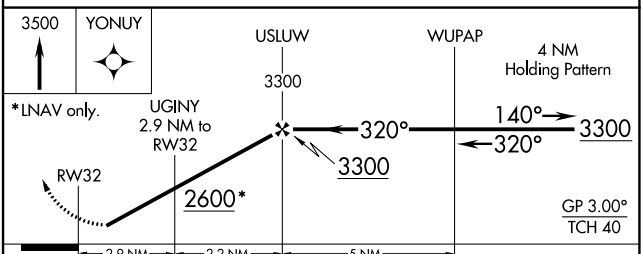
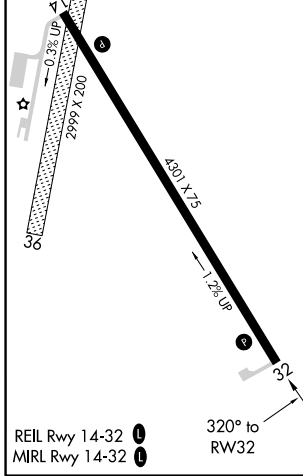
**NA** DME/DME RNP-0.3 NA. Rwy 32 helicopter visibility reduction below 3/4 SM NA. Baro-VNAV NA. Use Hebronn altimeter setting, when not received use Hastings altimeter setting and increase all DA 41 feet and all MDA 60 feet, increase LPV Cats A/B/C visibility to 1 1/4 and LNAV/VNAV Cats A/B/C visibility to 1 3/8, increase LNAV Cat C visibility to 1 1/2, increase Circling Cat C visibility to 2. Circling to Rwy 18/36 NA at night.

MISSED APPROACH: Climb to 3500 direct YONU and hold.

|                              |  |                               |
|------------------------------|--|-------------------------------|
| HJH AWOS-3<br><b>118.525</b> | MINNEAPOLIS CENTER<br><b>119.4 278.8</b> | UNICOM<br><b>123.0 (CTAF)</b> |
|------------------------------|--|-------------------------------|



|           |           |
|-----------|-----------|
| ELEV 1692 | TDZE 1680 |
|-----------|-----------|



| CATEGORY     | A          | B               | C                             | D  |
|--------------|------------|-----------------|-------------------------------|----|
| LPV DA       | 2014-1 1/8 | 334 (400-1 1/8) |                               | NA |
| LNAV/VNAV DA | 2054-1 1/4 | 374 (400-1 1/4) |                               | NA |
| LNAV MDA     | 2160-1     | 480 (500-1)     | 2160-1 3/8<br>480 (500-1 3/8) | NA |
| CIRCLING     | 2360-1     | 668 (700-1)     | 2360-1 3/4<br>668 (700-1 3/4) | NA |

NC-2, 09 SEP 2021 to 07 OCT 2021

NC-2, 09 SEP 2021 to 07 OCT 2021