

RNAV (GPS) RWY 17

GEORGE L SCOTT MUNI (3Y2)

WAAS CH 78238 W17A	APP CRS 174°	Rwy Idg TDZE Apt Elev	4149 1232 1232
----------------------------------------	------------------------	-----------------------------	-------------------------------------------

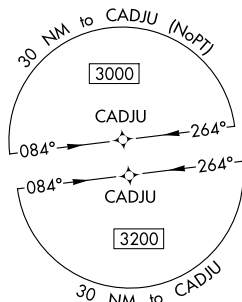
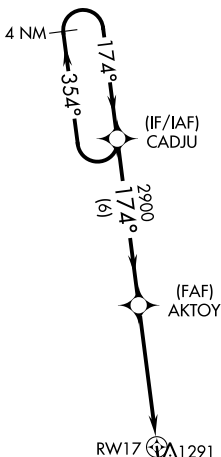
RNP APCH.

NA For uncompensated Baro-VNAV systems, LNAV/VNAV NA below -17°C (2°F) or above 54°C (130°F). Baro-VNAV and VDP NA when using Decorah altimeter setting. Helicopter visibility reduction below 3/4 SM NA. Obtain local altimeter setting on CTAF; when not received, use Decorah altimeter setting and increase LPV and LNAV/VNAV DA to 1533 all Cats, increase all MDA 60 feet, and LNAV Cat C visibility 1/8 mile.

MISSED APPROACH:
Climb to 3200 direct KIRTS and hold.

MINNEAPOLIS CENTER
118.85

UNICOM
122.8 (CTAF)



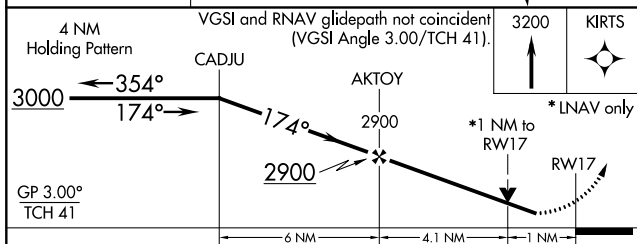
MISSED APCH FIX



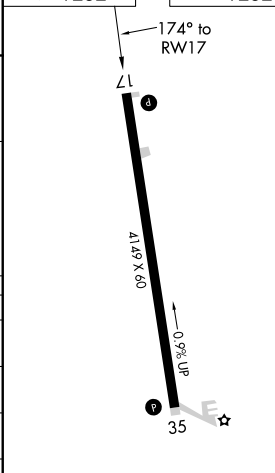
△1726

1545 △

△1617



ELEV 1232 | TDZE 1232



CATEGORY	A	B	C	D
LPV DA	1482-1	250 (300-1)		NA
LNAV/VNAV DA	1482-1	250 (300-1)		NA
LNAV MDA	1580-1	348 (400-1)		NA
C CIRCLING	1740-1	508 (600-1)	1860-1 3/4 628 (700-1 3/4)	NA

MIRL Rwy 17-35

NC-3, 09 SEP 2021 to 07 OCT 2021

NC-3, 09 SEP 2021 to 07 OCT 2021