

WAAS CH <b>61216</b> <b>W20A</b>	APP CRS <b>200°</b>	Rwy Idg <b>6100</b> TDZE <b>3786</b> Apt Elev <b>3788</b>
----------------------------------------	------------------------	-----------------------------------------------------------------

# RNAV (GPS) RWY 20

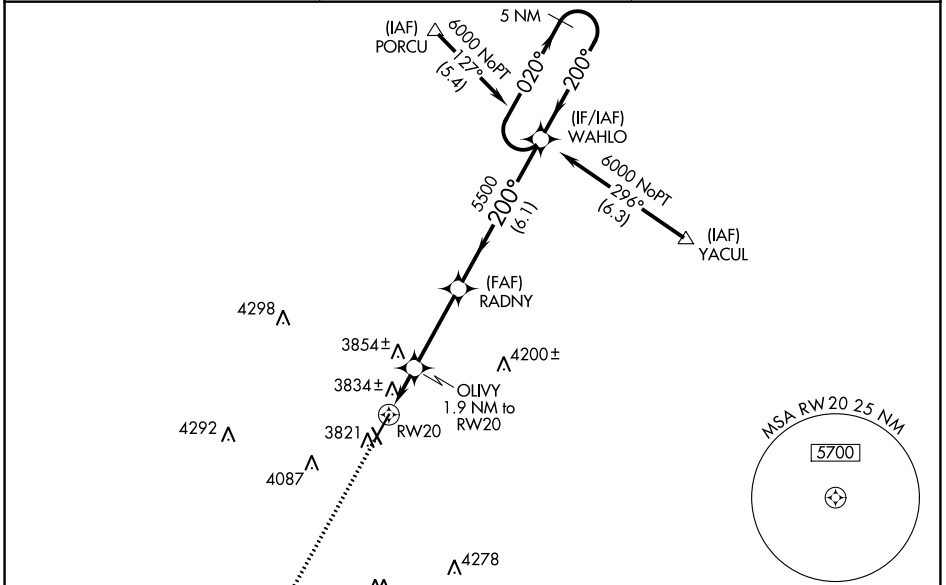
HEREFORD MUNI (HR.X)

RNP APCH.

▼ For uncompensated Baro-VNAV systems, LNAV/VNAV NA below -22°C (-7°F) or above 41°C (105°F).  
 ▲ When local altimeter setting not received, use Rick Husband Amarillo Intl altimeter setting: Increase LPV DA to 4098 feet and all Cats visibility ¼ SM, increase LNAV/VNAV DA to 4232 feet and all Cats visibility ¼ SM, increase all MDA 120 feet; increase LNAV Cats C/D visibility ½ SM, increase Circling Cat C visibility ½ SM and Cat D visibility ½ SM. Baro-VNAV NA when using Rick Husband Amarillo Intl altimeter setting. VDP NA with Rick Husband Amarillo Intl altimeter setting.

MISSED APPROACH:  
Climb to 6000 direct LEMGE and hold.

AWOS-3 <b>118.05</b>	AMARILLO APP CON ★ <b>119.5 307.0</b>	UNICOM <b>122.8 (CTAF) ①</b>
-------------------------	------------------------------------------	---------------------------------

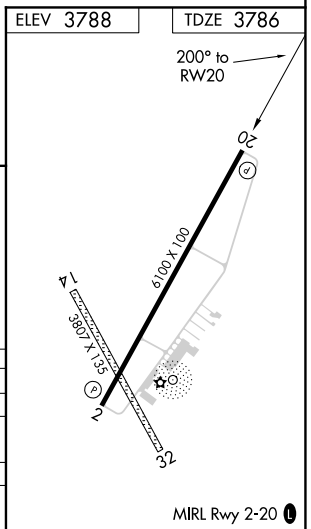


LEMGE

ELEV 3788 | TDZE 3786

	6000	LEMGE	RADNY	WAHLO	5 NM Holding Pattern
*LNAV only.	*1.2 NM to RW20	OLIVY 1.9 NM to RW20	5500	200°	6000
		*4420	5500	200°	GP 3.00° TCH 48
	1.2 NM	0.7 NM	3.3 NM	6.1 NM	

CATEGORY	A	B	C	D
LPV DA	3986-¾ 200 (200-¾)			
LNAV/DA VNAV	4120-1¼ 334 (400-1¼)			
LNAV MDA	4220-1	434 (500-1)	4220-1¼	434 (500-1¼)
CIRCLING	4280-1	492 (500-1)	4440-1¾	4620-2¾
			652 (700-1¾)	832 (900-2¾)



SC-2, 09 SEP 2021 to 07 OCT 2021

SC-2, 09 SEP 2021 to 07 OCT 2021