

APP CRS	Rwy Idg	4797
046°	TDZE	1029
	Apt Elev	1029

RNAV (GPS) RWY 4

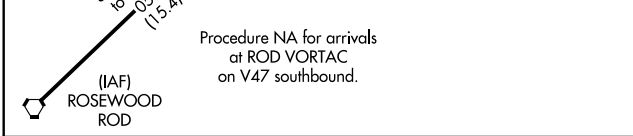
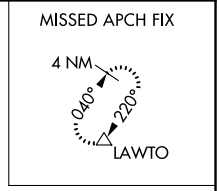
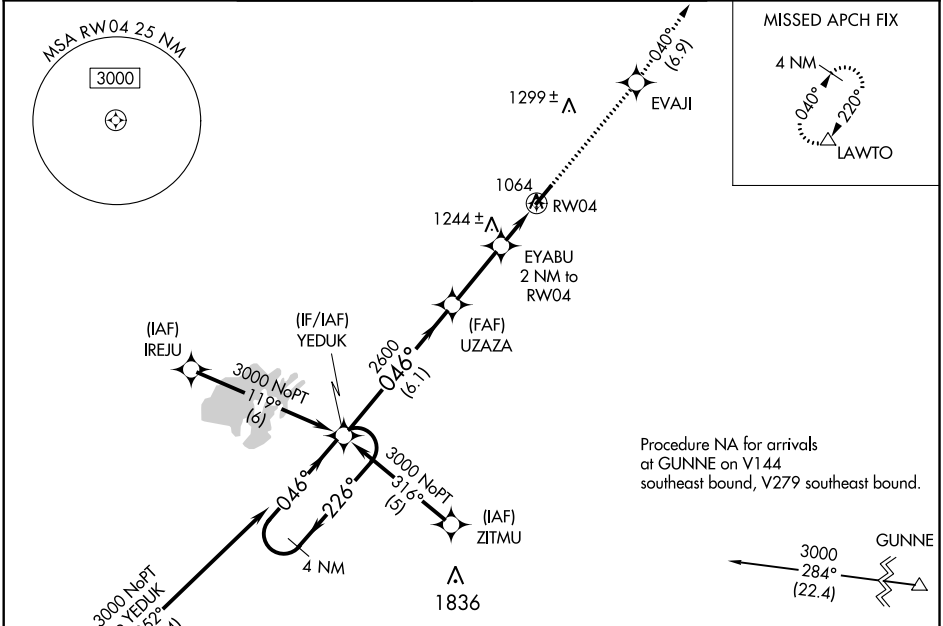
HARDIN COUNTY (I95)

RNP APCH.

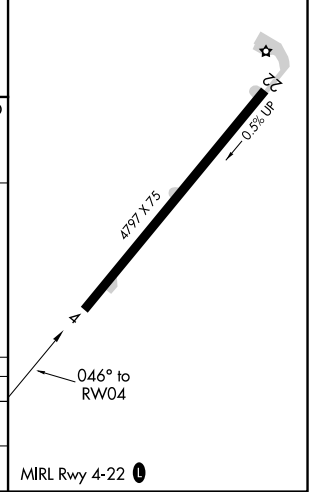
▽ Rwy 4 helicopter visibility reduction below 1 SM NA.
▲ NA Procedure NA at night. Use Lima altimeter setting.

MISSED APPROACH:
 Climb to 3000 direct EVAJI and on track 040° to LAWTO and hold.

AWOS-2 126.4	AOH ASOS 128.725	COLUMBUS APP CON 118.425 323.15	UNICOM 122.8 (CTAF) 0 *
------------------------	----------------------------	---	-----------------------------------



ELEV 1029	TDZE 1029
-----------	-----------



CATEGORY	A	B	C	D
LNAV MDA	1560-1	531 (600-1)	1560-1½ 531 (600-1½)	1560-1¾ 531 (600-1¾)
CIRCLING	1580-1 551 (600-1)	1600-1 571 (600-1)	1600-1½ 571 (600-1½)	1600-2 571 (600-1)

EC-2, 09 SEP 2021 to 07 OCT 2021

EC-2, 09 SEP 2021 to 07 OCT 2021