

WAAS CH <b>65903</b> <b>W01A</b>	APP CRS <b>007°</b>	Rwy Idg <b>4206</b> TDZE <b>797</b> Apt Elev <b>798</b>
--	------------------------	---

# RNAV (GPS) RWY 1

SKYHAVEN (RCM)

**⚠** Baro-VNAV NA when using Whiteman AFB altimeter setting. For uncompensated Baro-VNAV systems, LNAV/VNAV NA below -16°C (4°F) or above 54°C (130°F). DME/DME RNP-0.3 NA.

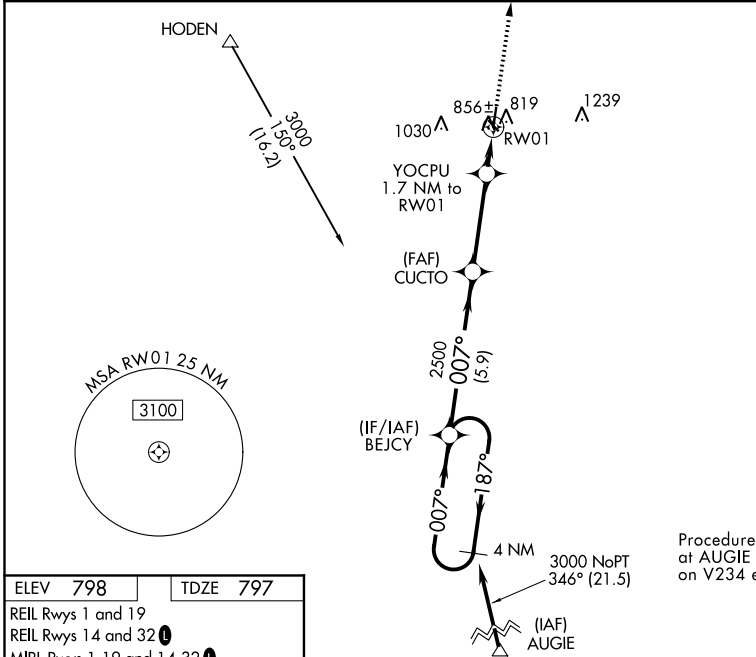
**⚠** Helicopter visibility reduction below 3/4 SM NA. When local altimeter setting not received, use Whiteman AFB altimeter setting and increase all DA 39 feet and all MDA 40 feet; increase LNAV/VNAV all Cats and LNAV Cat C visibility 1/8 mile, and increase Cat C Circling visibility 1/4 mile.

**MISSED APPROACH:**  
Climb to 3000 direct  
FALIS and hold.

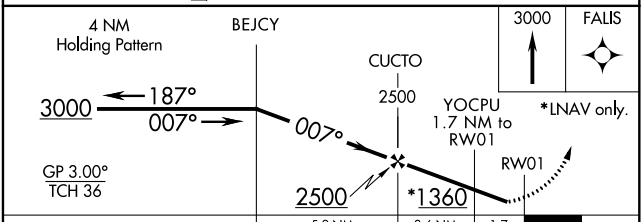
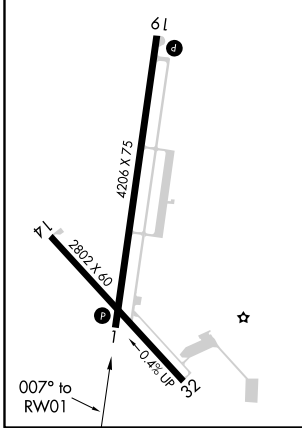
AWOS-3PT  
**119.575**

WHITEMAN APP CON \*  
**127.45 284.0**

UNICOM  
**123.0 (CTAF) 0**



ELEV 798	TDZE 797
REIL Rwy 1 and 19	REIL Rwy 14 and 32
MIRL Rwy 1-19 and 14-32	



CATEGORY	A	B	C	D
LPV DA	1047-1	250 (300-1)		NA
LNAV/VNAV DA	1158-1 1/4	361 (400-1 1/4)		NA
LNAV MDA	1220-1	423 (500-1)	1220-1 1/4 423 (500-1 1/4)	NA
<b>C</b> CIRCLING	1260-1 462 (500-1)	1340-1 542 (600-1)	1380-1 1/2 582 (600-1 1/2)	NA

NC-3, 09 SEP 2021 to 07 OCT 2021

NC-3, 09 SEP 2021 to 07 OCT 2021