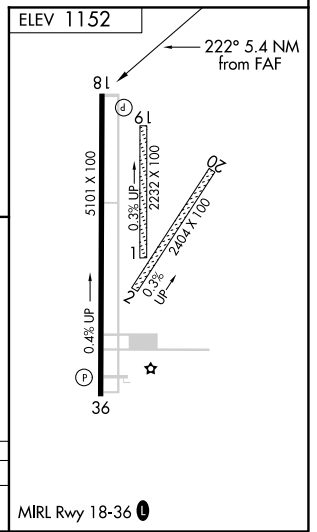
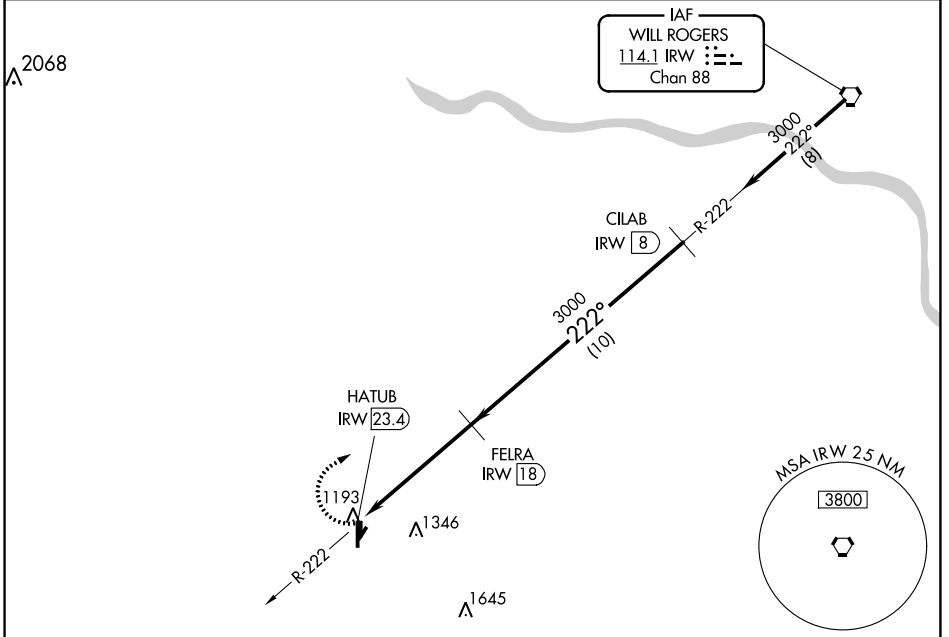


VORTAC IRW <b>114.1</b> Chan <b>88</b>	APP CRS <b>222°</b>	Rwy Idg TDZE Apt Elev	<b>N/A</b> <b>N/A</b> <b>1152</b>
--	------------------------	-----------------------------	---

**VOR/DME-A**  
CHICKASHA MUNI (CHK)

<p><b>▽</b> If local altimeter not received; use Oklahoma City/Will Rogers World altimeter setting and increase all MDAs 80 feet. Night landing: Rwy 1, 2, 19, 20 NA.</p>	<p>MISSED APPROACH: Climbing right turn to 3000 direct IRW VORTAC.</p>	
<p>AWOS-3 <b>118.175</b></p>	<p>OKE CITY APP CON <b>124.6 266.8</b></p>	<p>UNICOM <b>123.0 (CTAF) 0</b></p>



3000	IRW	FELRA IRW <b>18</b>	CILAB IRW <b>8</b>	
HATUB IRW <b>23.4</b>			Procedure Turn NA	
5.4 NM		10 NM		
CATEGORY	A	B	C	D
<b>C</b> CIRCLING	1660-1 508 (600-1)	1660-1¼ 508 (600-1¼)	1700-1½ 548 (600-1½)	NA

SC-1, 09 SEP 2021 to 07 OCT 2021

SC-1, 09 SEP 2021 to 07 OCT 2021