

WAAS CH <b>61038</b> <b>W05A</b>	APP CRS <b>053°</b>	Rwy Idg TDZE Apt Elev	<b>5005</b> <b>270</b> <b>273</b>
--	------------------------	-----------------------------	---

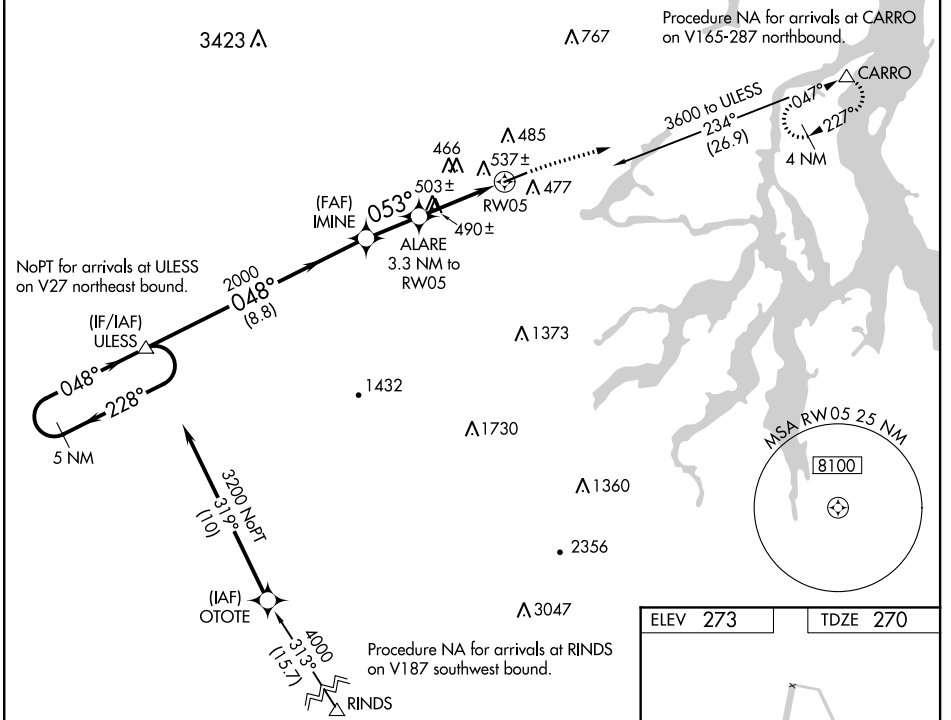
# RNAV (GPS) RWY 5

SANDERSON FIELD (SHN)

**⚠** DME/DME RNP-0.3 NA. Circling NA for Cats C and D south of Rwy 5-23. Helicopter visibility reduction below 3/4 SM NA. When local altimeter setting not received, use Olympia altimeter setting and increase all MDA by 60 feet, increase LP and LNAV visibility Cats C, D and Circling Cat C visibility 1/2 mile.

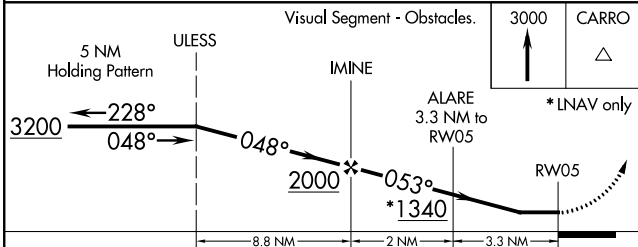
**⚠** MISSED APPROACH: Climb to 3000 direct CARRO and hold.

ASOS <b>119.275</b>	SEATTLE APP CON <b>121.1 290.9</b>	UNICOM <b>122.8 (CTAF)</b> <b>⓪</b>
------------------------	---------------------------------------	--



NW-1, 09 SEP 2021 to 07 OCT 2021

NW-1, 09 SEP 2021 to 07 OCT 2021



ELEV 273	TDZE 270
----------	----------

0.3% UP

5005 X 100

REIL Rwy 23 **⓪**  
MIRL Rwy 5-23 **⓪**

CATEGORY	A	B	C	D
LP MDA	740-1	470 (500-1)	740-1 3/8	470 (500-1 3/8)
LNAV MDA	800-1	530 (600-1)	800-1 5/8	530 (600-1 5/8)
<b>C</b> CIRCLING	840-1	567 (600-1)	840-1 1/2	1200-3 927 (1000-3)