

WAAS CH <b>63135</b> <b>W32A</b>	APP CRS <b>323°</b>	Rwy Idg <b>4400</b> TDZE <b>1800</b> Apt Elev <b>1800</b>
--	------------------------	---

# RNAV (GPS) RWY 32

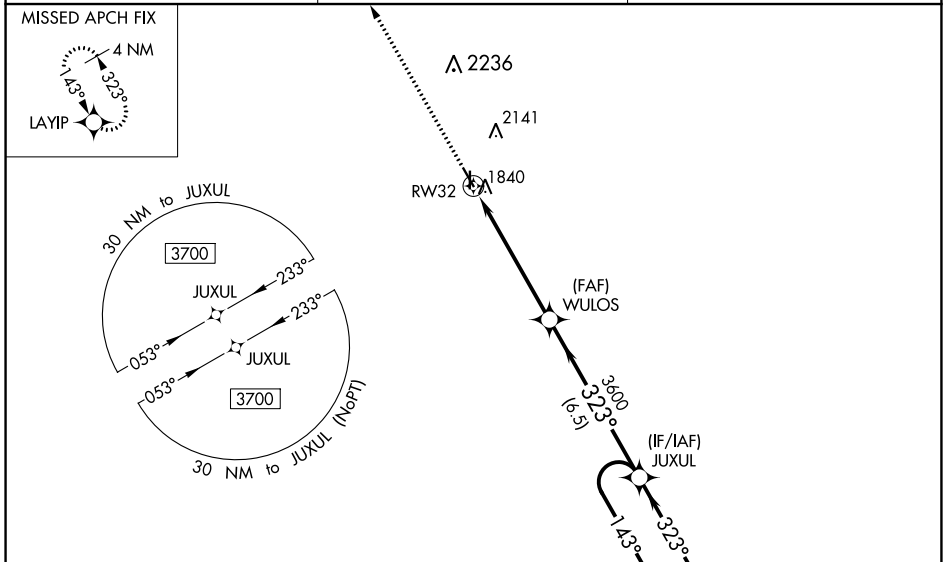
SMITH CENTER MUNI (K82)

RNP APCH.

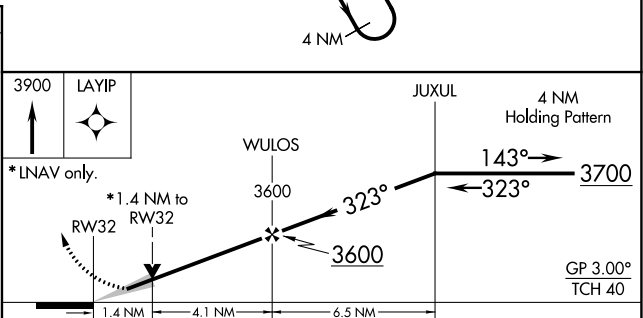
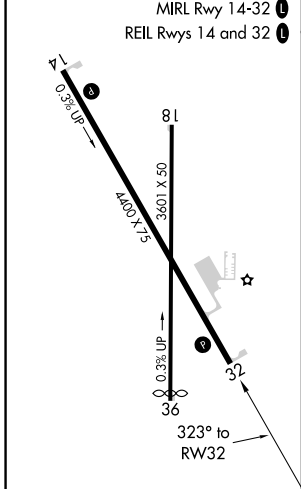
For uncompensated Baro-VNAV systems, LNAV/VNAV NA below -18°C or above 54°C. When local altimeter setting not received, use Concordia altimeter setting and increase all DA 169 feet and all MDA 180 feet; increase LPV all Cats visibility ¼ SM, LNAV/VNAV all Cats visibility ½ SM, Circling Cat A visibility ¼ SM and Circling Cat B visibility ½ SM. Baro-VNAV and VDP NA with Concordia altimeter setting. Circling Rwy 36 NA at night.

MISSED APPROACH: Climb to 3900 direct LAYIP and hold.

AWOS-3PT <b>118.45</b>	MINNEAPOLIS CENTER <b>119.4 278.8</b>	UNICOM <b>122.8 (CTAF) 0</b>
---------------------------	--	---------------------------------



ELEV 1800	<b>D</b> TDZE 1800
-----------	--------------------



CATEGORY	A	B	C	D
LPV DA	2000-¾	200 (200-¾)		NA
LNAV/VNAV DA	2050-⅞	250 (300-⅞)		NA
LNAV MDA	2300-1	500 (500-1)		NA
<b>C</b> CIRCLING	2480-1 680 (700-1)	2580-1 780 (800-1)		NA

NC-2, 09 SEP 2021 to 07 OCT 2021

NC-2, 09 SEP 2021 to 07 OCT 2021