

WAAS CH 58025 W18A	APP CRS 178°	Rwy Idg TDZE Apt Elev	3001 1434 1434
--	------------------------	-----------------------------	---

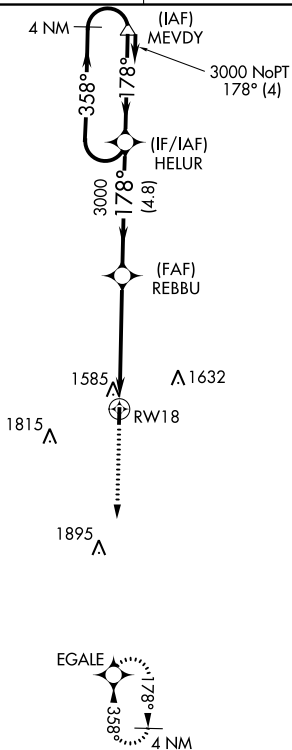
RNAV (GPS) RWY 18

JERRY SUMNERS SR AURORA MUNI (2H2)

RNP APCH. Use Springfield altimeter setting; when not received, use Branson altimeter setting and increase all MDA 40 feet. Circling Rwy 36 NA at night. Rwy 18 helicopter visibility reduction below 3/4 SM NA. MISSED APPROACH: Climb to 3100 direct EGALE and hold.

SPRINGFIELD APP CON
124.95 318.2

UNICOM
122.8 (CTAF)



Procedure NA for arrivals at MEVDY on V14 northeast bound.

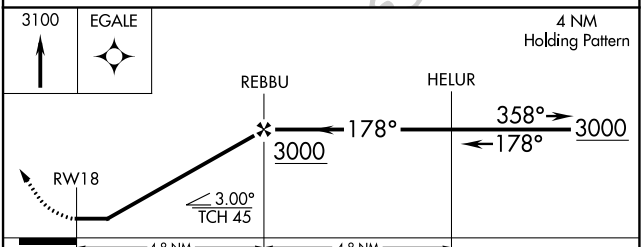
NC-3, 09 SEP 2021 to 07 OCT 2021

NC-3, 09 SEP 2021 to 07 OCT 2021

ELEV 1434	TDZE 1434
-----------	-----------

178° to RW18

300 ft x 60 ft
0.3% UP
36 81



CATEGORY	A	B	C	D
LP MDA	1940-1	506 (600-1)		NA
LNAV MDA	1940-1	506 (600-1)		NA
CIRCLING	1980-1	546 (600-1)		NA