

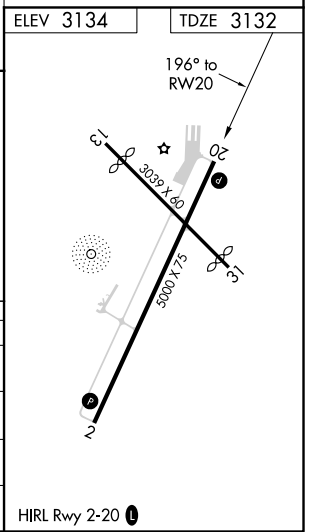
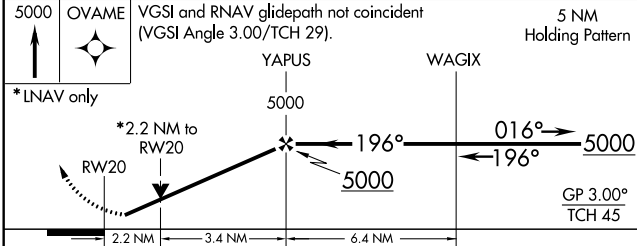
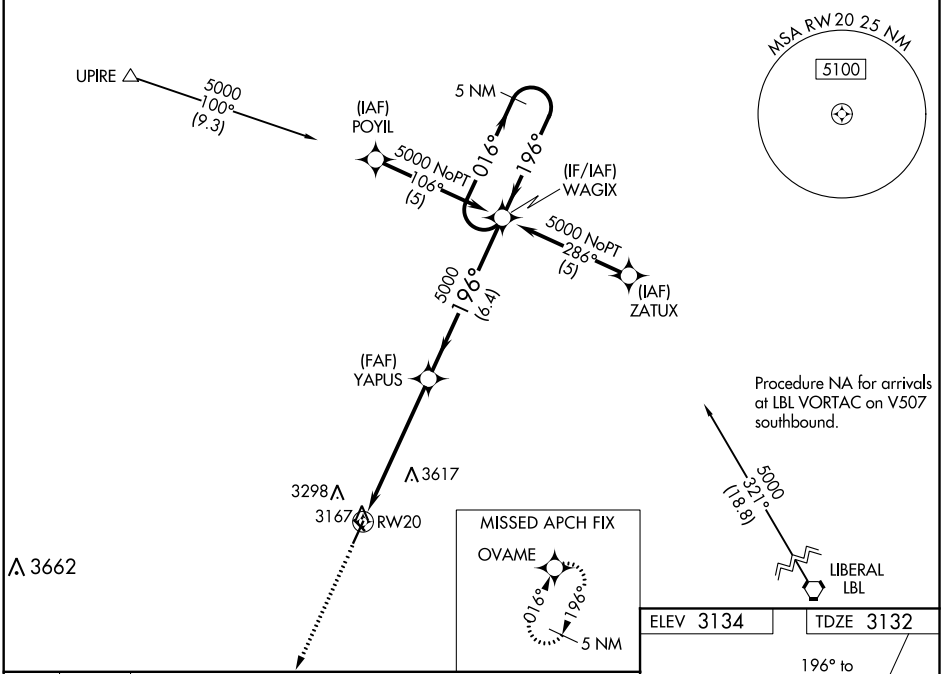
WAAS CH <b>86603</b> W20A	APP CRS <b>196°</b>	Rwy Idg TDZE <b>3132</b> Apt Elev <b>3134</b>
---------------------------------	------------------------	---

# RNAV (GPS) RWY 20

HUGOTON MUNI (HQQ)

RNP APCH.	<p><b>▽</b> For uncompensated Baro-VNAV systems, procedure NA below -21°C or above 54°C. Circling Rwy 13, 31 NA at night. Rwy 20 helicopter visibility reduction below 3/4 SM NA.</p>	MISSED APPROACH: Climb to 5000 direct OVAME and hold.
-----------	---	---

AWOS-3PT <b>118.6</b>	KANSAS CITY CENTER <b>134.0 257.865</b>	UNICOM <b>122.8 (CTAF) 0</b>
--------------------------	--	---------------------------------



CATEGORY	A	B	C	D
LPV DA	3382-1	250 (300-1)		NA
LNNAV/VNAV DA	3437-1	305 (400-1)		NA
LNNAV MDA	3860-1	728 (800-1)	3860-2 728 (800-2)	NA
<b>C</b> CIRCLING	3860-1	726 (800-1)	3980-2½ 846 (900-2½)	NA

NC-2, 09 SEP 2021 to 07 OCT 2021

NC-2, 09 SEP 2021 to 07 OCT 2021