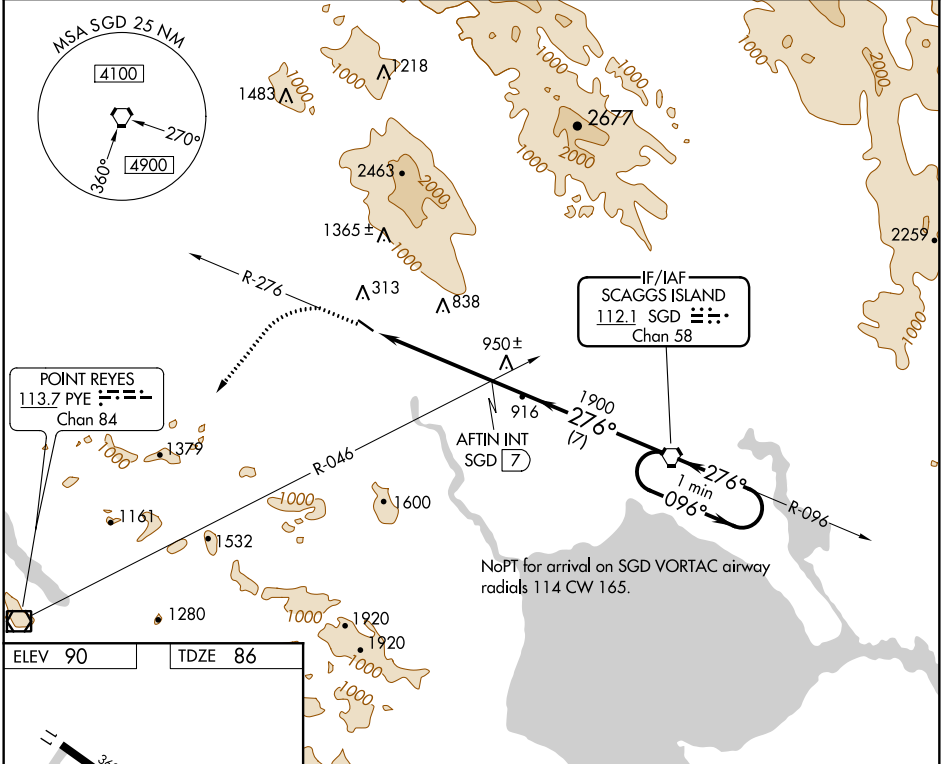


VORTAC SGD 112.1 Chan 58	APP CRS 276°	Rwy Idg 3600 TDZE 86 Apt Elev 90
---------------------------------------	------------------------	---

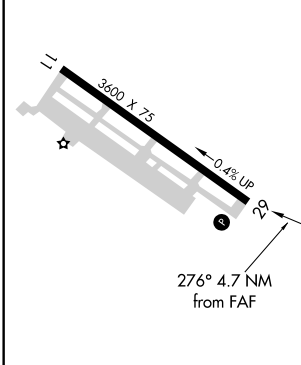
VOR RWY 29
PETALUMA MUNI (O69)

N Night landing: Rwy 11 NA, Rwy 29 operational VGSI required, remain on or above VGSI glidepath until threshold.
NA Helicopter visibility reduction below 1 SM NA.
MISSED APPROACH: Climb to 2000 via SGD R-276 then climbing left turn to 3500 direct PYE VOR/DME.

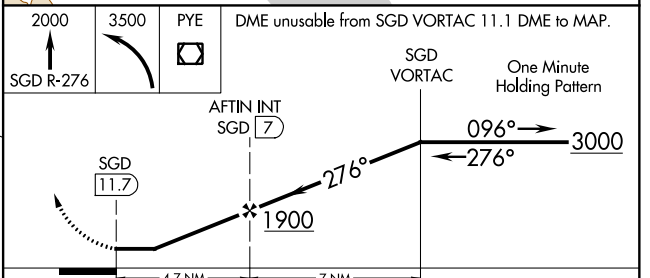
AWOS-3P 132.325	OAKLAND CENTER 127.8 353.5	UNICOM 122.7 (CTAF)
---------------------------	--------------------------------------	-------------------------------



ELEV 90	TDZE 86
---------	---------



REIL Rwy 29	MIRL Rwy 11-29				
FAF to MAP 4.7 NM					
Knots	60	90	120	150	180
Min:Sec	4:42	3:08	2:21	1:53	1:34



CATEGORY	A	B	C	D
S-29	1260-1¼ 1174 (1200-1¼)	1260-1½ 1174 (1200-1½)		NA
CIRCLING	1260-1⅛ 1170 (1200-1⅛)	1260-1½ 1170 (1200-1½)		NA

SW-2, 09 SEP 2021 to 07 OCT 2021

SW-2, 09 SEP 2021 to 07 OCT 2021