

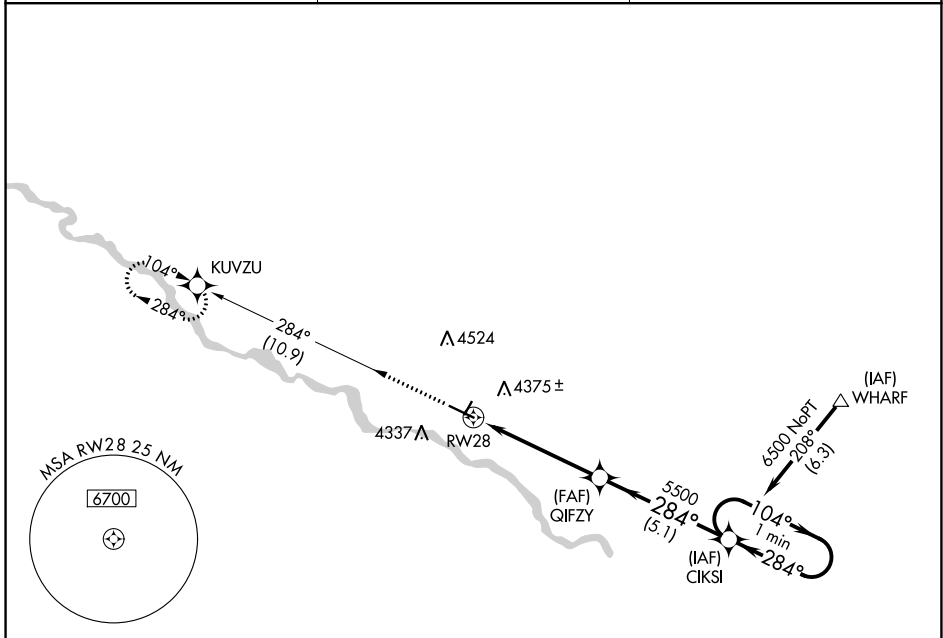
APP CRS	Rwy Idg	5703
284°	TDZE	4202
	Apt Elev	4207

GPS RWY 28

TORRINGTON MUNI (TOR)

NA	Procedure NA at night. Helicopter visibility reduction below 1 SM NA.	MISSED APPROACH: Climb to 6500 via 284° course to KUVZU WP and hold.
----	--	--

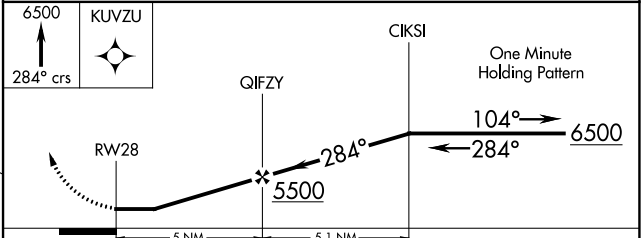
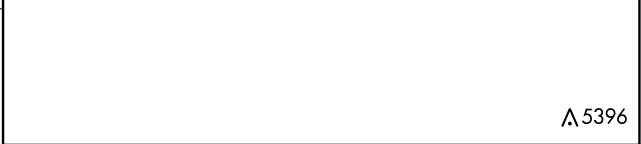
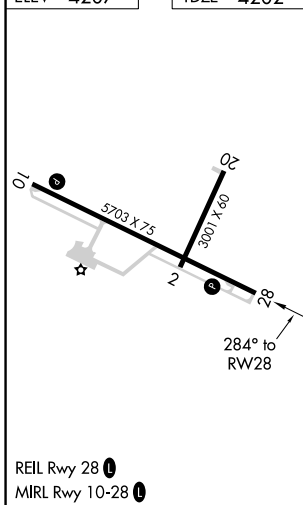
ASOS 118.375	DENVER CENTER 127.95 338.2	UNICOM 122.8 (CTAF) 0
------------------------	--------------------------------------	---------------------------------



NW-1, 09 SEP 2021 to 07 OCT 2021

NW-1, 09 SEP 2021 to 07 OCT 2021

ELEV 4207	TDZE 4202
-----------	-----------



CATEGORY	A	B	C	D
S-28	4620-1	418 (500-1)	4620-1¼	418 (500-1¼)
CIRCLING	4740-1	533 (600-1)	4740-1½ 533 (600-1½)	4820-2 613 (700-2)