

WAAS CH 87108 W18A	APP CRS 181°	Rwy Idg TDZE Apt Elev	5001 685 685
--	------------------------	-----------------------------	---

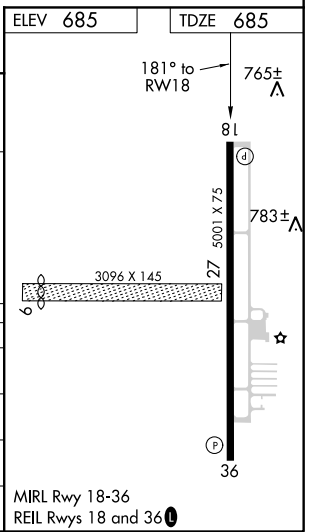
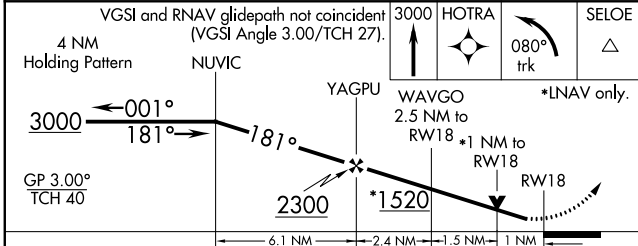
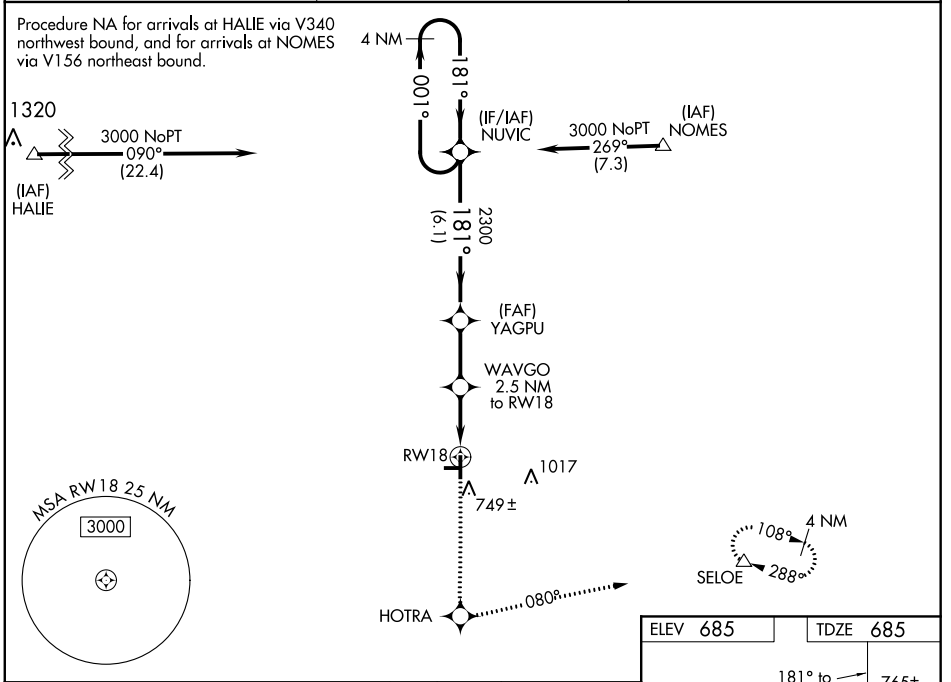
RNAV (GPS) RWY 18

STARKE COUNTY (OXI)

⚠ DME/DME RNP-0.3 NA. Visibility reduction by helicopters NA. For uncompensated Baro-VNAV systems, LNAV/VNAV NA below -16°C (4°F) or above 47°C (116°F). Baro-VNAV and VDP NA when using South Bend altimeter setting. Obtain local altimeter setting on CTAF, when not received use South Bend altimeter setting and increase all MDA/DA 80 feet, increase LPV and LNAV/VNAV visibilities ¼ mile all Cats, increase LNAV Cat C, D visibilities ¼ mile.

MISSED APPROACH: Climb to 3000 direct HOTRA and left turn via 080° track to SELOE and hold.

AWOS-3 135.775	SOUTH BEND APP CON* 132.05 257.8	UNICOM 122.8 (CTAF) 0
--------------------------	--	---------------------------------



CATEGORY	A	B	C	D
LPV DA		935-1	250 (300-1)	
LNAV/ VNAV DA		1035-1¼	350 (400-1¼)	
LNAV MDA	1040-1	355 (400-1)		1040-1¼ 355 (400-1¼)
CIRCLING	1100-1 415 (500-1)	1140-1 455 (500-1)	1140-1½ 455 (500-1½)	1240-2 555 (500-2)

MIRL Rwy 18-36
REIL Rwy 18 and 36 0

EC-2, 09 SEP 2021 to 07 OCT 2021

EC-2, 09 SEP 2021 to 07 OCT 2021