

| | | |
|--|------------------------|---|
| WAAS CH 53730 W17A | APP CRS 172° | Rwy Idg TDZE 1738 Apt Elev 1739 |
|--|------------------------|---|

RNAV (GPS) RWY 17

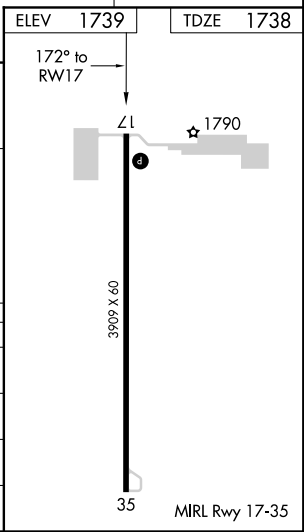
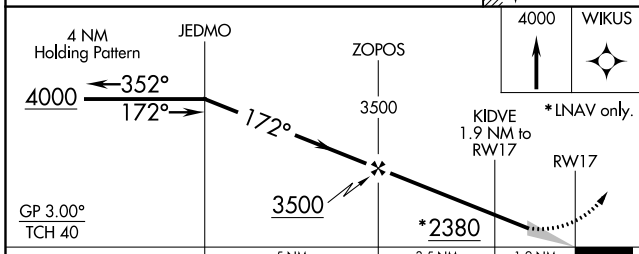
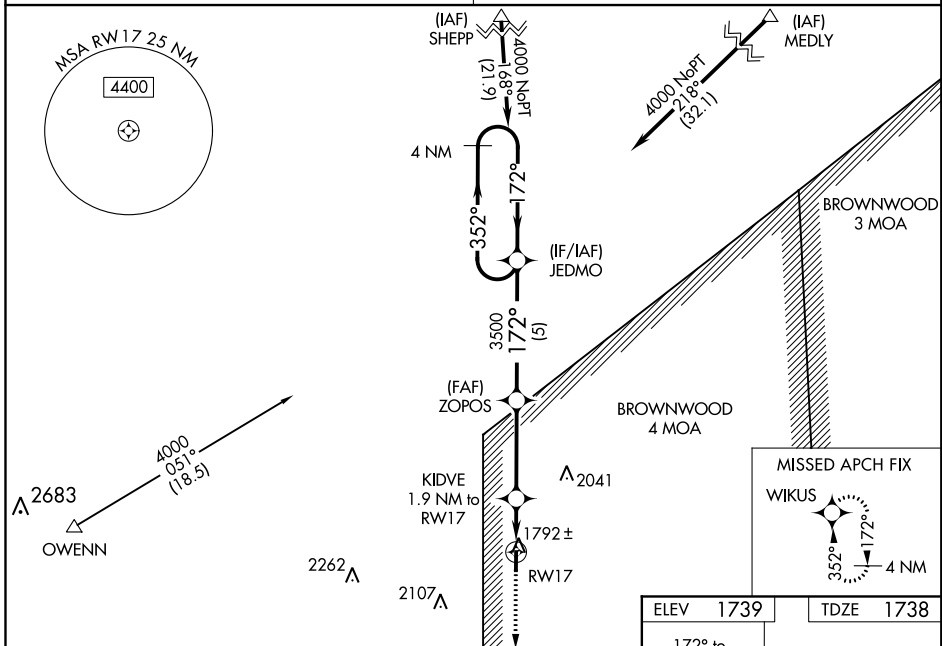
BRUCE FIELD (E30)

Baro-VNAV NA.
DME/DME RNP-0.3 NA.
NA
 Use San Angelo altimeter setting, when not received use Brady altimeter setting and increase all DA 15 feet and all MDA 20 feet, and increase LPV and LNAV/VNAV all Cats visibility 1/8 mile.

MISSED APPROACH:
 Climb to 4000 direct WIKUS and hold.

SAN ANGELO APP CON ★
125.35 354.1

CTAF
122.9 0



| CATEGORY | A | B | C | D |
|--------------|------------|-----------------|---|----|
| LPV DA | 2089-1 1/8 | 351 (400-1 1/8) | | NA |
| LNAV/VNAV DA | 2089-1 1/8 | 351 (400-1 1/8) | | NA |
| LNAV MDA | 2160-1 | 422 (500-1) | | NA |
| CIRCLING | 2220-1 | 481 (500-1) | | NA |

SC-3, 09 SEP 2021 to 07 OCT 2021

SC-3, 09 SEP 2021 to 07 OCT 2021