

WAAS CH 49108 W35A	APP CRS 353°	Rwy Idg TDZE Apt Elev	4605 1823 1827
--	------------------------	-----------------------------	---

RNAV (GPS) RWY 35

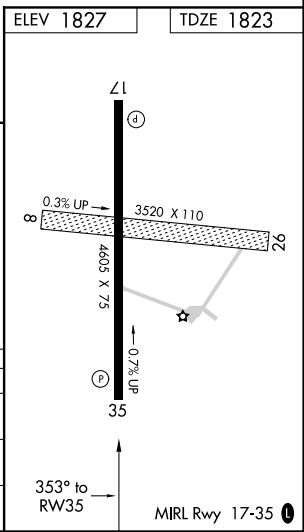
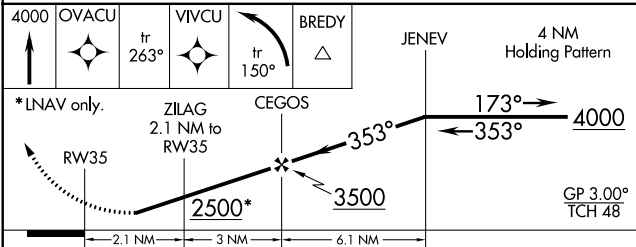
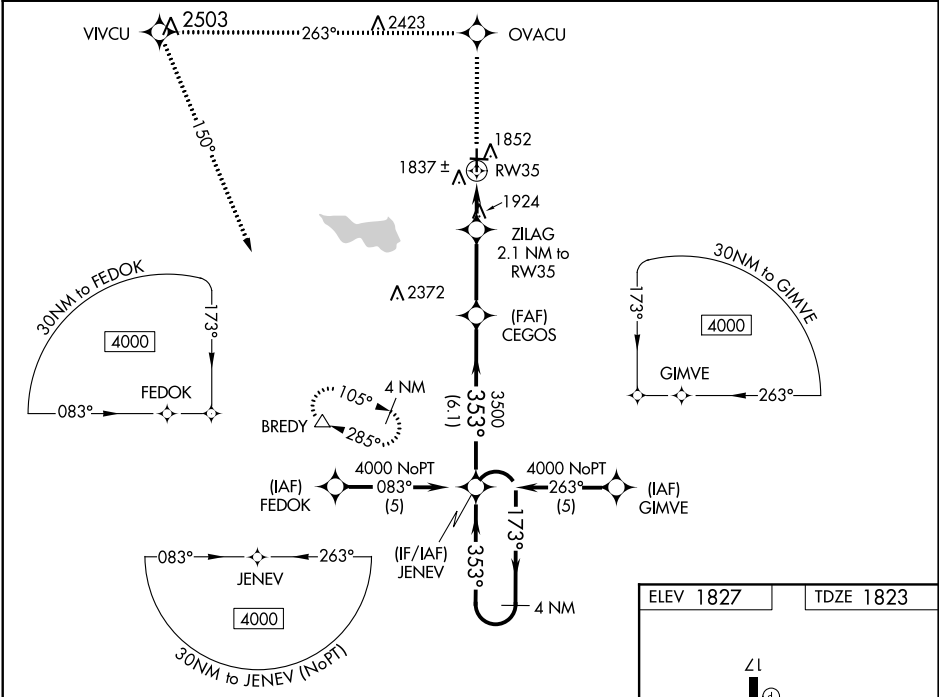
CURTIS FIELD (BBD)

RNP APCH.

⚠ For uncompensated Baro-VNAV systems, LNAV/VNAV NA below -18°C (0°F) or above 54°C (130°F). When local altimeter setting not received, use Junction altimeter setting and increase all DA/MDA 120 feet, increase LPV, LNAV/VNAV all Cats visibility ½ mile, LNAV Cat C visibility ¼ mile. Baro-VNAV NA when using Junction altimeter setting. Rwy 35 helicopter visibility reduction below ¾ SM NA.

MISSED APPROACH: Climb to 4000 direct OVACU and via 263° track to VIVCU and left turn via 150° track to BREDY and hold.

AWOS-3 118.375	HOUSTON CENTER 132.35 317.5	UNICOM 122.8 (CTAF)
--------------------------	---------------------------------------	-------------------------------



CATEGORY	A	B	C	D
LPV DA	2073-1 250 (300-1)			NA
LNAV/VNAV DA	2107-1 284 (300-1)			NA
LNAV MDA	2240-1 417 (500-1)		2240-1¼ 417 (500-1¼)	NA

SC-3, 09 SEP 2021 to 07 OCT 2021

SC-3, 09 SEP 2021 to 07 OCT 2021