


WAAS CH 57999 W35A	APP CRS 353°	Rwy Idg 6002 TDZE 697 Apt Elev 700
----------------------------------------	------------------------	---------------------------------------------------------------

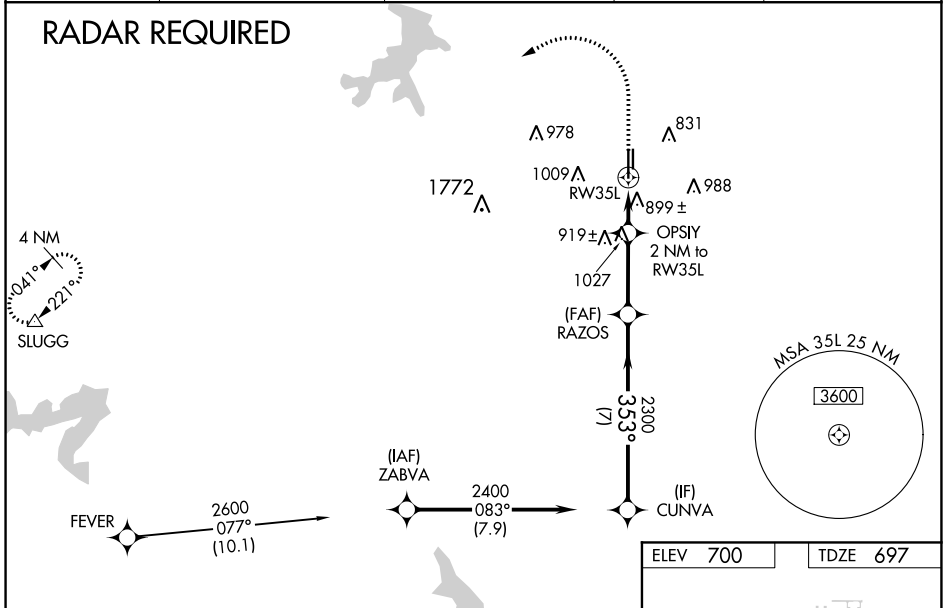
RNAV (GPS) RWY 35L

FORT WORTH SPINKS (FWS)

⚠ For uncompensated Baro-VNAV systems, LNAV/VNAV NA below -16°C (4°F) or above 39°C (102°F). Circling NA west of Rwy 17R-35L. DME/DME RNP-0.3 NA. Baro-VNAV and VDP NA when using Fort Worth Meacham altimeter setting. When local altimeter setting not received, use Fort Worth Meacham altimeter setting and increase all DA 37 feet and all MDA 40 feet, increase LNAV/VNAV all Cats visibility 1/8 mile. For inop MALSRL increase LNAV/VNAV all Cats visibility to 1/8 mile and increase LNAV Cats C/D visibility to 1/8 mile. For inop MALSRL when using Fort Worth Meacham altimeter setting, increase LNAV/VNAV all Cats visibility to 1/4 mile and LNAV Cats C/D visibility to 1/8 mile.

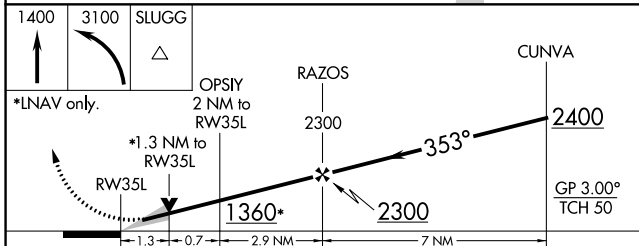
MALSRL

MISSED APPROACH:
 Climb to 1400 then climbing left turn to 3100 direct SLUGG and hold.

ATIS 120.025	REGIONAL APP CON 135.975 379.9	SPINKS TOWER ★ 124.625 (CTAF) 	GND CON 119.475	UNICOM 122.7
------------------------	------------------------------------------	---------------------------------------------------------------------------------------------------------------------------	---------------------------	------------------------

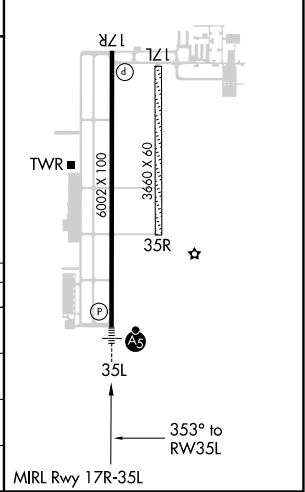


SC-2, 09 SEP 2021 to 07 OCT 2021

SC-2, 09 SEP 2021 to 07 OCT 2021



ELEV 700	TDZE 697
----------	----------



CATEGORY	A	B	C	D
LPV DA	897-1/2		200 (200-1/2)	
LNAV/VNAV DA	1193-1 1/4		496 (500-1 1/4)	
LNAV MDA	1160-1/2 463 (500-1/2)		1160-1 463 (500-1)	
CIRCLING	1200-1 500 (500-1)		1200-1 1/2 560 (500-1 1/2)	