

WAAS CH <b>82517</b> <b>W12A</b>	APP CRS <b>120°</b>	Rwy Idg TDZE Apt Elev	<b>4501</b> <b>413</b> <b>425</b>
--	------------------------	-----------------------------	---

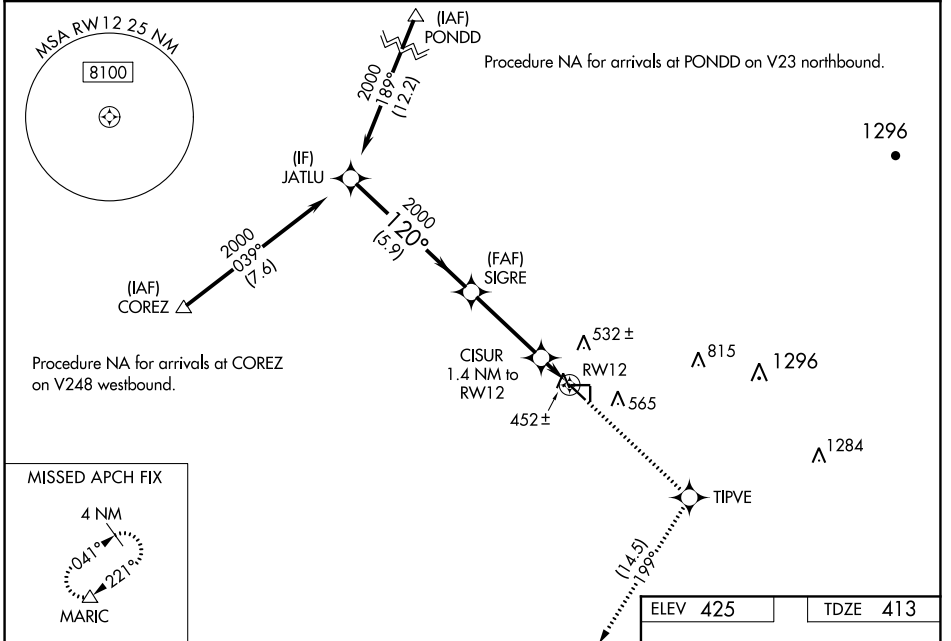
# RNAV (GPS) RWY 12

SHAFTER-MINTER FLD (MIT)

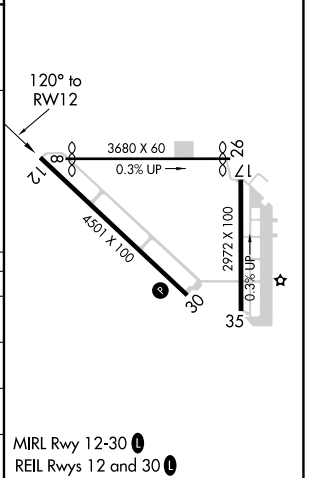
**NA** Baro-VNAV NA when using Bakersfield altimeter setting. For uncompensated Baro-VNAV systems, LNAV/VNAV NA below -15°C (5°F) or above 54°C (130°F).  
 When local altimeter setting not received, use Bakersfield altimeter setting and increase LPV and LNAV/VNAV DA to 694 feet and LNAV/VNAV visibility to 7/8 all Cats; increase all MDA 40 feet. DME/DME RNP-0.3 NA.  
 Night Landing Rwy 17, 35, 8, 26 NA.

MISSED APPROACH: Climb to 3000 direct TIPVE and on track 199° to MARIC and hold.

AWOS-3 <b>121.125</b>	BAKERSFIELD APP CON ★ <b>126.45 270.3</b>	CTAF <b>122.9</b>
--------------------------	--	----------------------



	JATLU	SIGRE	CISUR 1.4 NM to RW12	RW12	TIPVE	MARIC
	2000	2000	2000	452 ±	532 ±	425
	039° (7.6)	120° (5.9)	120° (0.6)	199° (1.4)	199° (1.4)	199° (1.4)
GP 3.00° TCH 45	5.9 NM		3.4 NM	0.6 NM	0.8 NM	
CATEGORY	A	B	C	D		
LPV DA		663-3/4 250 (300-3/4)			NA	
LNAV/VNAV DA		663-3/4 250 (300-3/4)			NA	
LNAV MDA		720-1 307 (300-1)			NA	
CIRCLING	900-1	475 (500-1)	900-1 1/2 475 (500-1 1/2)		NA	



SW-3, 09 SEP 2021 to 07 OCT 2021

SW-3, 09 SEP 2021 to 07 OCT 2021