


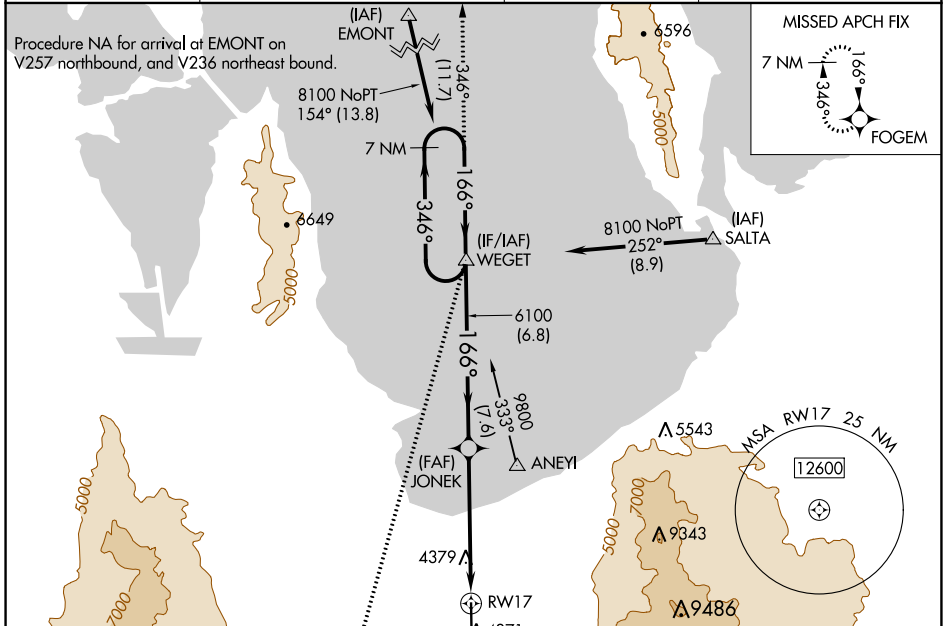
WAAS CH 73031 W17A	APP CRS 166°	Rwy ldg TDZE Apt Elev	6100 4297 4322
--	------------------------	-----------------------------	---

RNAV (GPS) RWY 17

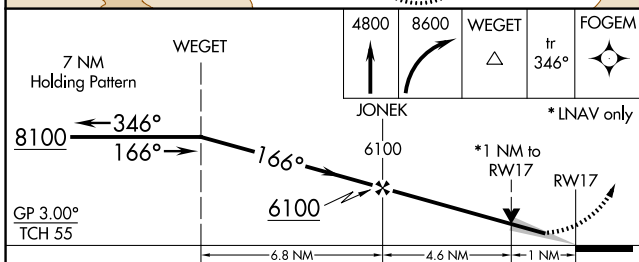
BOLINDER FIELD-TOOELE VALLEY (TVY)

<p>⚠ For uncompensated Baro-VNAV systems, LNAV/VNAV NA below -23°C (-9°F) or above 49°C (120°F). DME/DME RNP-0.3 NA. For inop ALS, increase LNAV/VNAV all Cats visibility to ¾ SM, increase LNAV Cat C/D visibility to 1 SM.</p>	<p>MALSR</p>  <p>MISSED APPROACH: Climb to 4800 then climbing right turn to 8600 direct WEGET and track 346° to FOGEM and hold.</p>
---	--

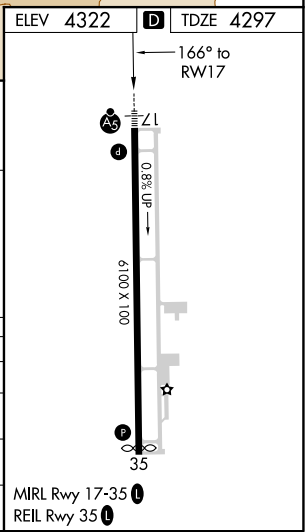
AWOS-3 119.725	SALT LAKE CITY APP CON 135.5 316.15	CLNC DEL 124.4	UNICOM 123.0 (CTAF) 0
--------------------------	---	--------------------------	---------------------------------



ELEV 4322	D TDZE 4297
-----------	--------------------



CATEGORY	A	B	C	D
LPV DA		4497-½	200 (200-½)	
LNAV/VNAV DA		4547-½	250 (300-½)	
LNAV MDA	4640-½	343 (400-½)	4640-⅝	343 (400-⅝)
C CIRCLING	4820-1 498 (500-1)	4900-1 578 (600-1)	5060-2 738 (800-2)	5380-3 1058 (1100-3)



SW-4, 09 SEP 2021 to 07 OCT 2021

SW-4, 09 SEP 2021 to 07 OCT 2021