

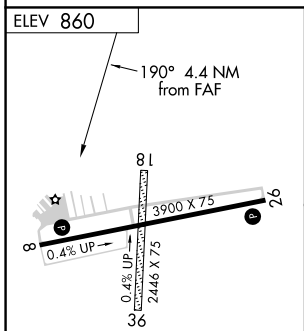
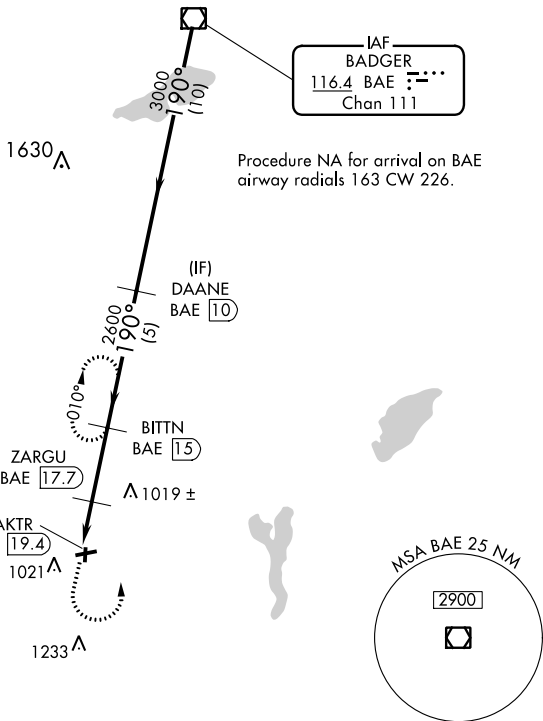
VOR/DME BAE 116.4 Chan 111	APP CRS 190°	Rwy Idg TDZE Apt Elev	N/A N/A 860
--	------------------------	-----------------------------	--

VOR/DME-A

EAST TROY MUNI (57C)

<p>∇ Circling NA to Rwys 18 and 36.</p>		<p>MISSED APPROACH: Climb to 2700 then left turn on BAE VOR/DME R-190 to BITTN/15 DME and hold.</p>	
--	--	---	--

AWOS-3PT 118.125	MILWAUKEE APP CON 125.35 307.0	GCO 121.725	UNICOM 123.0 (CTAF) 📞
----------------------------	--	-----------------------	--



<p>2700</p> <p>BAE R-190</p>	<p>BITTN BAE 15</p>		<p>DAANE BAE 10</p>		<p>BAE VOR/DME</p>		
	<p>ZARGU BAE 17.7</p> <p>BITTN BAE 15</p>		<p>3000</p> <p>190°</p>		<p>3000</p>		
<p>MAKTR BAE 19.4</p> <p>1800</p> <p>2600</p>		<p>5 NM</p>		<p>10 NM</p>			
<p>1.7 NM</p>		<p>2.7 NM</p>		<p>5 NM</p>			
CATEGORY	A		B		C		D
CIRCLING	1340-1		480 (500-1)		NA		

MIRL Rwy 8-26 **📞**
REIL Rwys 8 and 26 **📞**

EC-3, 09 SEP 2021 to 07 OCT 2021

EC-3, 09 SEP 2021 to 07 OCT 2021