

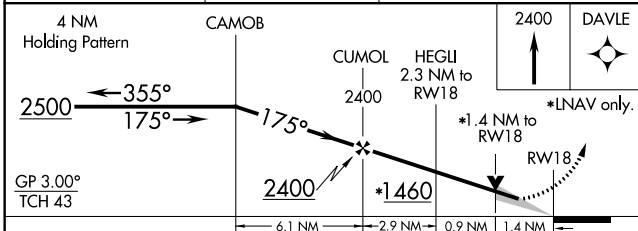
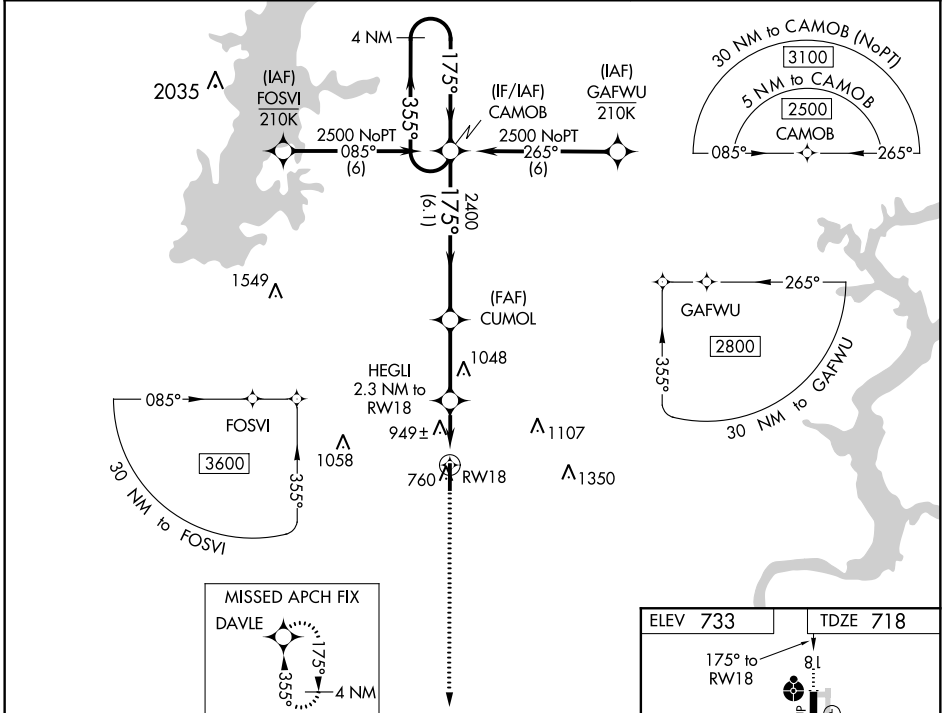
WAAS CH <b>63214</b> <b>W18A</b>	APP CRS <b>175°</b>	Rwy Idg <b>5200</b> TDZE <b>718</b> Apt Elev <b>733</b>
--	------------------------	---

# RNAV (GPS) RWY 18

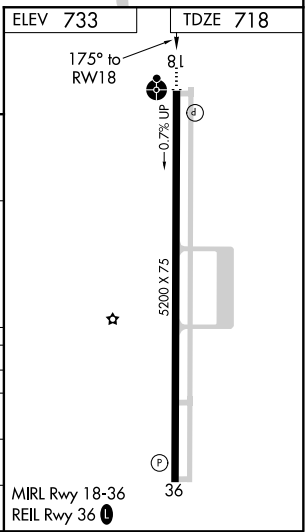
CLAREMORE RGNL (GCM)

For uncompensated Baro-VNAV systems, LNAV/VNAV NA below -16°C (4°F) or above 54°C (130°F). DME/DME RNP-0.3 NA. For inop ALS, increase LNAV/VNAV Cats A/B visibility to 1% SM.	ODALS 	MISSED APPROACH: Climb to 2400 direct DAVLE and hold.
---	-----------	---

AWOS-3P <b>119.925</b>	TULSA APP CON <b>119.1 351.8</b>	UNICOM <b>122.7 (CTAF) 0</b>
---------------------------	-------------------------------------	---------------------------------



CATEGORY	A	B	C	D
LPV DA	968- <sup>3</sup> / <sub>4</sub>	250 (300- <sup>3</sup> / <sub>4</sub> )		NA
LNAV/VNAV DA	1281-1 <sup>1</sup> / <sub>2</sub>	563 (600-1 <sup>1</sup> / <sub>2</sub> )		NA
LNAV MDA	1200- <sup>3</sup> / <sub>4</sub>	482 (500- <sup>3</sup> / <sub>4</sub> )	1200-1 <sup>1</sup> / <sub>4</sub> 482 (500-1 <sup>1</sup> / <sub>4</sub> )	NA
CIRCLING	1260-1	527 (600-1)	1380- <sup>1</sup> / <sub>4</sub> 647 (700- <sup>1</sup> / <sub>4</sub> )	NA



SC-1, 09 SEP 2021 to 07 OCT 2021

SC-1, 09 SEP 2021 to 07 OCT 2021