

WAAS CH 82720 W18A	APP CRS 177°	Rwy Idg TDZE Apt Elev	5500 903 910
--	------------------------	-----------------------------	---

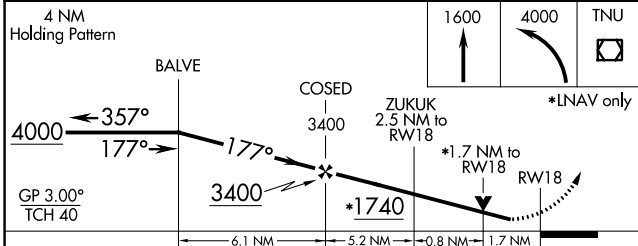
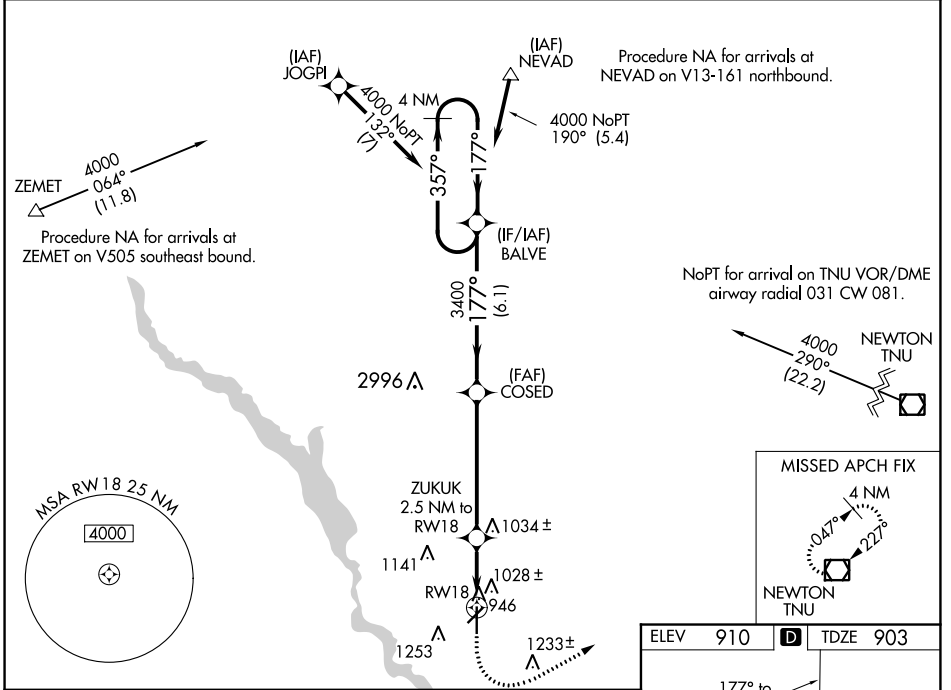
RNAV (GPS) RWY 18

ANKENY RGNL (IKV)

⚠ For uncompensated Baro-VNAV systems, LNAV/VNAV NA below -21° C (-5°F) or above 54°C (130°F). Circling Rwy 22 NA at night. Rwy 18 helicopter visibility reduction below ¾ SM NA. DME/DME RNP-0.3 NA.

MISSED APPROACH: Climb to 1600 then climbing left turn to 4000 direct TNU VOR/DME and hold.

AWOS-3 119.175	DES MOINES APP CON 123.9 307.15	CLNC DEL 126.65	(CTAF) 122.9
--------------------------	---	---------------------------	------------------------



ELEV 910	D	TDZE 903
----------	----------	----------

177° to RW18

81

5500 ± 100

4000 x 75

0.3% UP

36

MIRL Rwy 4-22 and 18-36 **⚠**

REIL Rwy 4, 18 and 36 **⚠**

REIL Rwy 22

CATEGORY	A	B	C	D
LPV DA		1153-7/8	250 (300-7/8)	
LNAV/VNAV DA		1354-1 1/2	451 (500-1 1/2)	
LNAV MDA	1480-1	577 (600-1)	1480-1 5/8	577 (600-1 5/8)
C CIRCLING	1560-1	650 (700-1)	1560-1 3/4 650 (700-1 3/4)	1760-2 3/4 850 (900-2 3/4)