

APP CRS 297°	Rwy Idg 2621
	TDZE 5
	Apt Elev 5

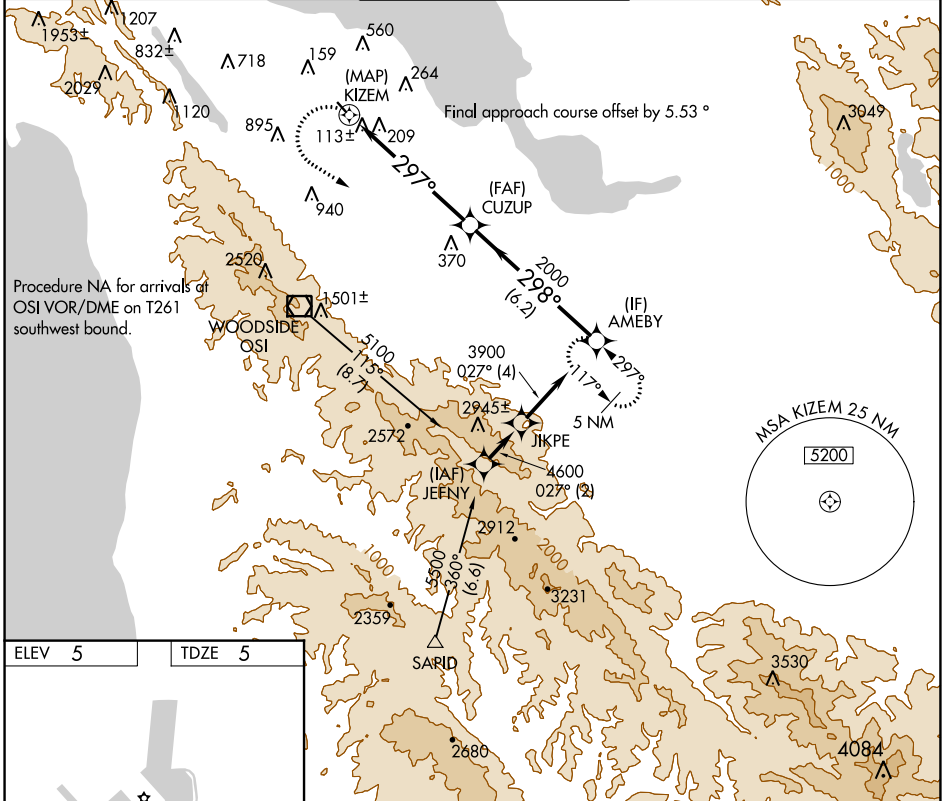
RNAV (GPS) Y RWY 30

SAN CARLOS (SQL)

▼ DME/DME RNP-0.3 NA. When local altimeter setting not received, use San Francisco Intl altimeter setting and increase all MDA 40 feet.
▲ Rwy 30 visibility reduction by helicopters below 1 SM NA. Circling NA west of Rwy 12-30.

MISSED APPROACH: Climbing left turn to 5400 direct AMEBY and hold, continue climb-in-hold to 5400.

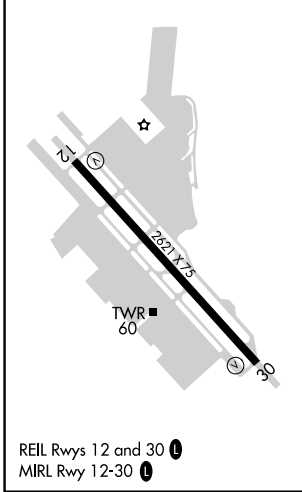
ATIS 125.9	NORCAL APP CON 133.95 317.6	SAN CARLOS TOWER ★ 119.0 (CTAF) 326.2	GND CON 121.6	UNICOM 122.95
----------------------	---------------------------------------	---	-------------------------	-------------------------



SW-2, 09 SEP 2021 to 07 OCT 2021

SW-2, 09 SEP 2021 to 07 OCT 2021

ELEV 5	TDZE 5
--------	--------



SAN CARLOS, CALIFORNIA
 Orig-B 27APR17

5400	AMEBY	VGSI and descent angles not coincident (VGSI Angle 3.00/TCH 25).	AMEBY
CUZUP			
KIZEM		3.05° TCH 40	3900
297°		2000	298°
0.1		5.9 NM	6.2 NM
CATEGORY	A	B	C D
LNAV MDA	1260-1¼	1255 (1300-1¼)	NA
CIRCLING	1260-1¼ 1255 (1300-1¼)	1260-1½ 1255 (1300-1½)	NA