

WAAS CH 81834 W32A	APP CRS 325°	Rwy Idg 4300 TDZE 1819 Apt Elev 1823
--	------------------------	---

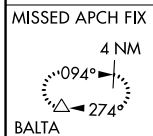
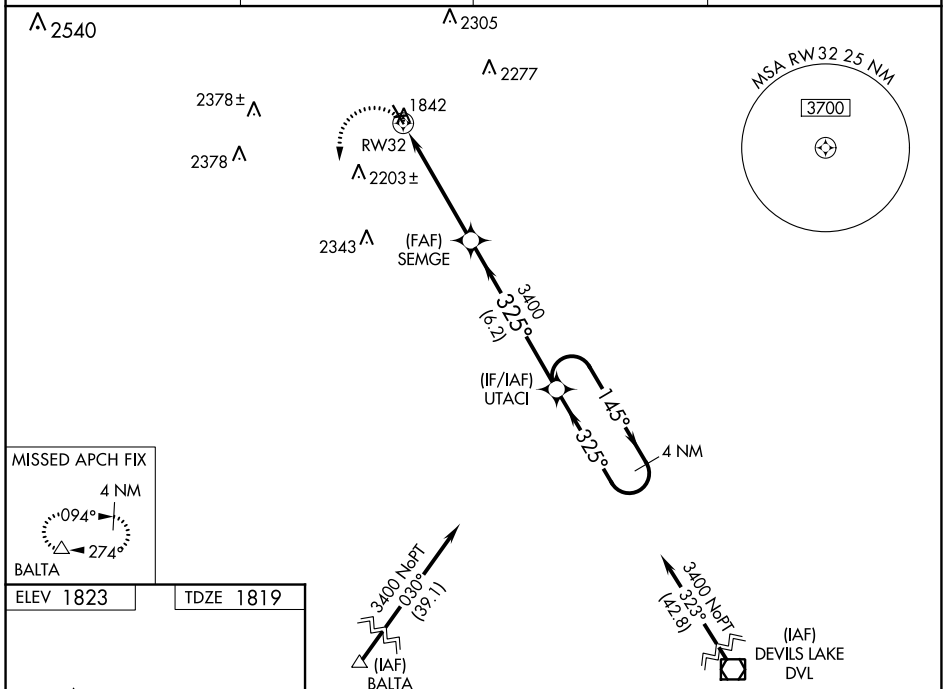
RNAV (GPS) RWY 32

ROLLA MUNI (Ø6D)

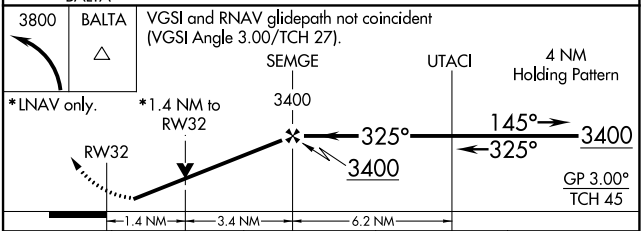
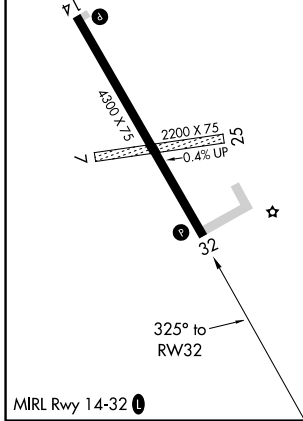
⚠ For uncompensated Baro-VNAV systems, LNAV/VNAV NA below -18°C (0°F) or above 54°C (130°F).
⚠ DME/DME RNP-0.3 NA. Baro-VNAV and VDP NA when using Cando Muni altimeter setting. Rwy 32 helicopter visibility reduction below 3/4 SM NA. When local altimeter setting not received, use Cando Muni altimeter setting and increase all DA 114 feet and LPV visibility 1/2 mile all Cats and LNAV/VNAV visibility 5/8 mile all Cats; increase all MDA 120 feet and LNAV Cat C and D visibility 1/2 mile; increase Circling Cat C visibility 3/4 mile, Cat D visibility 1/4 mile. Circling NA to Rwy 7 and 25. Circling Rwy 14 NA at night.

MISSED APPROACH:
 Climbing left turn to 3800 direct BALTA and hold.

AWOS-3 118.125	9D7 AWOS-3 118.325	MINNEAPOLIS CENTER 127.6 279.6	UNICOM 122.8 (CTAF) ⓪
--------------------------	------------------------------	--	---------------------------------



ELEV 1823	TDZE 1819
-----------	-----------



CATEGORY	A	B	C	D
LPV DA	2069-1 250 (300-1)			
LNAV/VNAV DA	2172-1 1/4 353 (400-1 1/4)			
LNAV MDA	2300-1 481 (500-1)	2300-1 3/8 481 (500-1 3/8)		
⓪ CIRCLING	2300-1 477 (500-1)	2340-1 517 (600-1)	2560-2 737 (800-2)	2700-2 3/4 877 (900-2 3/4)

NC-1, 09 SEP 2021 to 07 OCT 2021

NC-1, 09 SEP 2021 to 07 OCT 2021