

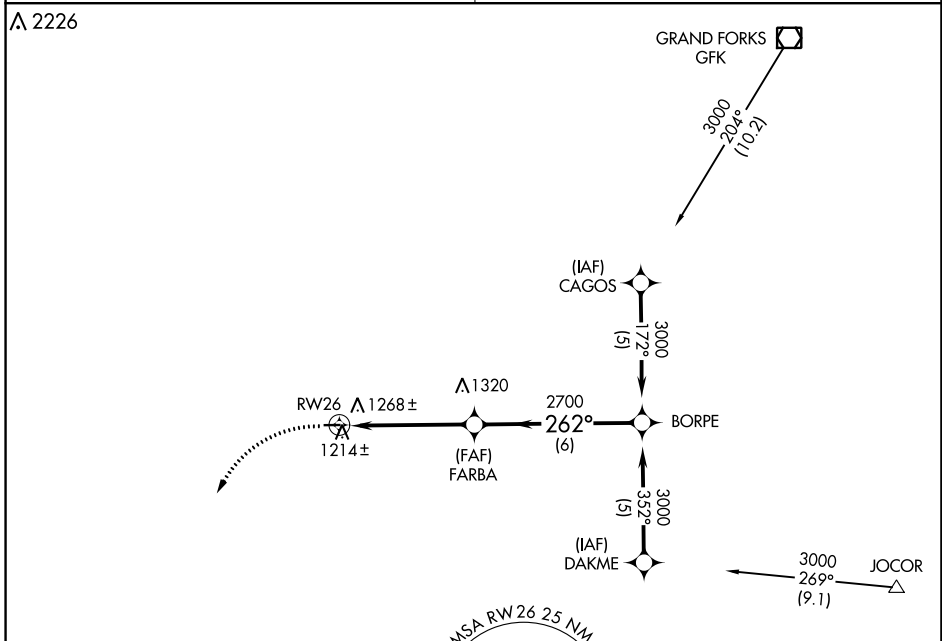
APP CRS	Rwy Idg	<b>3160</b>
<b>262°</b>	TDZE	<b>1117</b>
	Apt Elev	<b>1117</b>

# RNAV (GPS) RWY 26

NORTHWOOD MUNI-VINCE FLD (4V4)

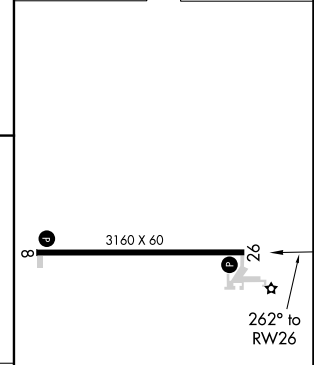
<p><b>▽</b> DME/DME RNP-0.3 NA.</p> <p><b>▲</b> NA Use Grand Forks Intl altimeter setting. Procedure NA at night.</p>	<p>MISSED APPROACH: Climb to 1800 then climbing left turn to 3500 direct UNIZY WP and hold.</p>
---	---

<p>GRAND FORKS APP CON ★</p> <p><b>118.1 318.1</b></p>	<p>UNICOM</p> <p><b>122.8 (CTAF) 0</b></p>
--	--



ELEV 1117	TDZE 1117
-----------	-----------

1800	3500	UNIZY
<p>RW26</p> <p>FARBA</p> <p>BORPE</p> <p>3000</p> <p>Procedure Turn NA</p>		
4.9 NM		6 NM



CATEGORY	A	B	C	D
LNVA MDA	1660-1	543 (600-1)	NA	
CIRCLING	1720-1	603 (700-1)	NA	

MIRL Rwy 8-26 0

NC-1, 09 SEP 2021 to 07 OCT 2021

NC-1, 09 SEP 2021 to 07 OCT 2021