

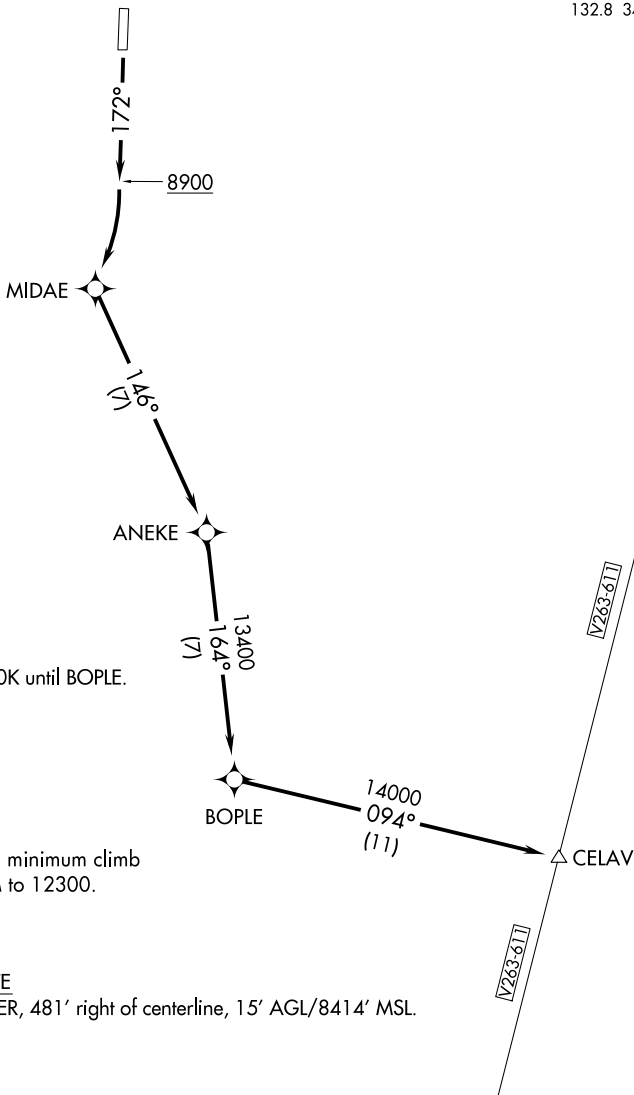
(ANEKE2.CELAV) 17229

# ANEKE TWO DEPARTURE (OBSTACLE) (RNAV)

AL-9482 (FAA)

ANGEL FIRE (A.XX)  
ANGEL FIRE, NEW MEXICO

AWOS-3  
118.025  
ALBUQUERQUE CENTER  
132.8 346.35



NOTE: Do not exceed 250K until BOPL E.  
NOTE: GPS required.  
NOTE: RNAV 1

### TAKEOFF MINIMUMS

Rwy 17: Standard with a minimum climb of 526' per NM to 12300.  
Rwy 35: NA- obstacles.

### TAKEOFF OBSTACLE NOTE

Rwy 17: Road 74' from DER, 481' right of centerline, 15' AGL/8414' MSL.

NOTE: Chart not to scale.

### DEPARTURE ROUTE DESCRIPTION

TAKEOFF RUNWAY 17: Climb heading 172° to 8900, then climbing right turn to 14000 direct MIDAE, then via 146° track to ANEKE, then via 164° track to BOPL E, then via 094° track to CELAV.

ANEKE TWO DEPARTURE (OBSTACLE) (RNAV)  
(ANEKE2.CELAV) 31JUL08

ANGEL FIRE, NEW MEXICO  
ANGEL FIRE (A.XX)

SW-1, 09 SEP 2021 to 07 OCT 2021

SW-1, 09 SEP 2021 to 07 OCT 2021