

APP CRS	Rwy ldg	4250
325°	TDZE	3560
	Apt Elev	3560

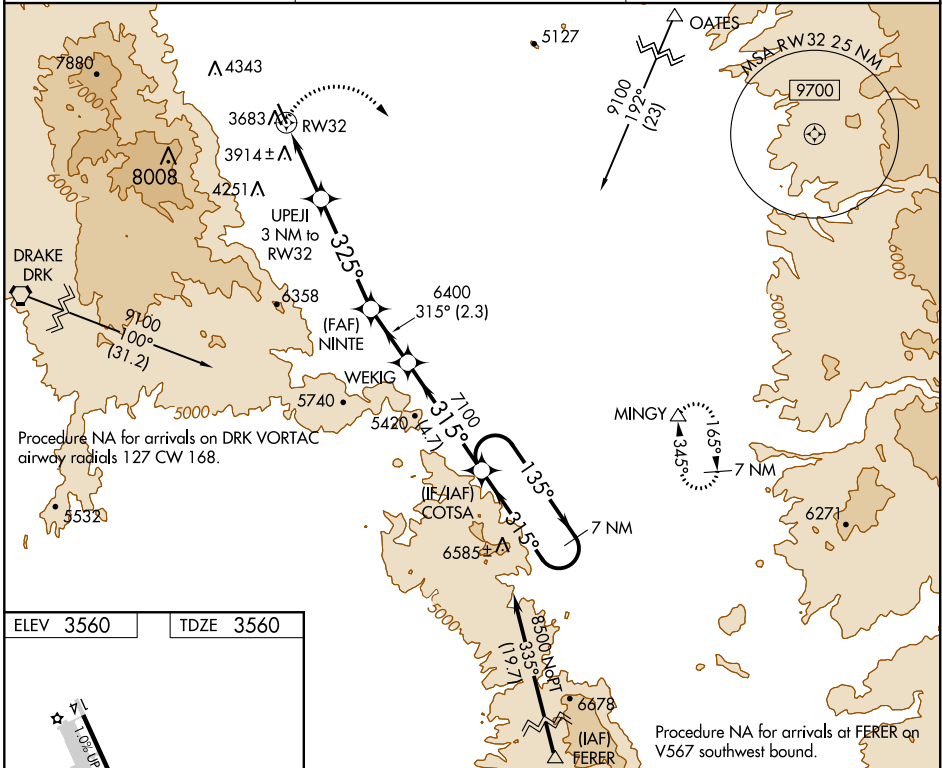
RNAV (GPS) RWY 32

COTTONWOOD (P52)

NA Circling NA southwest of Rwy 14-32. DME/DME RNP-0.3 NA. Procedure NA at night. Helicopter visibility reduction below 1 SM NA. When local altimeter setting not received, use Sedona altimeter setting and increase all MDA 200 feet, increase LNAV and Circling Cat A/B visibility 1/4 mile, LNAV Cat C visibility 1/2 mile, Circling Cat C visibility 3/4 mile.

MISSED APPROACH: Climbing right turn to 10000 direct MINGY and hold, continue climb-in-hold to 10000.

AWOS-3 119.925	PHOENIX APP CON 126.375 236.775	UNICOM 122.7 (CTAF)
--------------------------	---	-------------------------------



ELEV 3560	TDZE 3560
MIRL Rwy 14-32 REIL Rwy 14 and 32	

10000	MINGY			
	△			
		WEKIG	COTSA	7 NM Holding Pattern
		NINTE		
		UPEJI 3 NM to RW32		
CATEGORY	A	B	C	D
LNAV MDA	4260-1	700 (700-1)	4260-2 700 (700-2)	NA
C CIRCLING	4260-1	700 (700-1)	4260-2 700 (700-2)	NA