

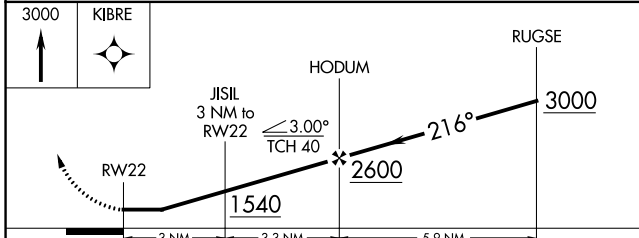
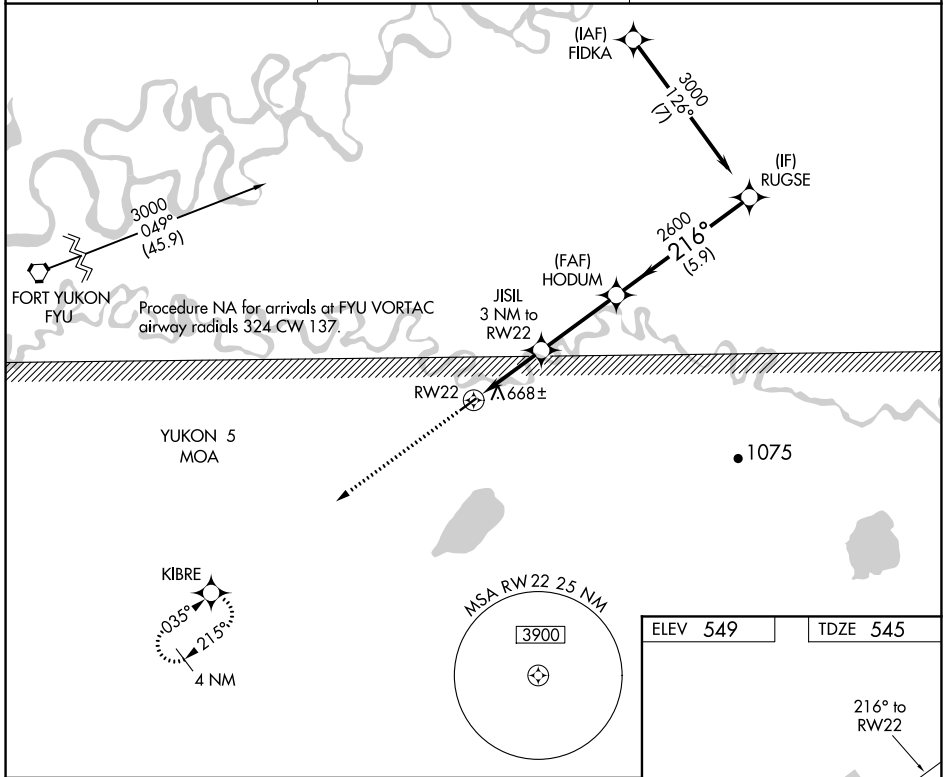
APP CRS	Rwy Idg	<b>3500</b>
<b>216°</b>	TDZE	<b>545</b>
	Apt Elev	<b>549</b>

# RNAV (GPS) RWY 22

CHALKYITSIK (CIK) (PACI)

RNP APCH.	<p>Procedure NA at night.</p> <p>NA Rwy 22 helicopter visibility reduction below 1 SM NA. Use Fort Yukon altimeter setting.</p>	MISSED APPROACH: Climb to 3000 direct KIBRE and hold.
-----------	---	---

FYU/PFYU AWOS-3P <b>125.8</b>	ANCHORAGE CENTER <b>135.0 225.4</b>	CTAF <b>122.9</b>
----------------------------------	--	----------------------



ELEV 549	TDZE 545
----------	----------

Runway details: RWY 22, 0.5% UP, 4000 x 75 ft. Obstacle at 614 ft.

CATEGORY	A	B	C	D
LNVA MDA	1020-1	475 (500-1)	1020-1 $\frac{3}{8}$	475 (500-1 $\frac{3}{8}$ )
CIRCLING	1080-1 531 (600-1)	1160-1 611 (700-1)	1200-1 $\frac{3}{4}$ 651 (700-1 $\frac{3}{4}$ )	1360-2 $\frac{3}{4}$ 811 (900-2 $\frac{3}{4}$ )

MIRL Rwy 4-22

AK, 12 AUG 2021 to 07 OCT 2021

AK, 12 AUG 2021 to 07 OCT 2021