

(LURIC7.LURIC) 21112

AL-10328 (FAA)

HOUSTON EXEC (TME)

LURIC SEVEN DEPARTURE (RNAV)

HOUSTON, TEXAS

ATIS
 119.525
 CLNC DEL
 132.075
 GND CON
 132.075
 EXECUTIVE TOWER ★
 126.975 (CTAF)
 HOUSTON DEP CON
 123.8 257.7

TOP ALTITUDE: ASSIGNED BY ATC

NOTE: RADAR required.
 NOTE: DME/DME/IRU or GPS required.
 NOTE: RNAV 1.

TAKEOFF MINIMUMS

Rwys 18, 36: Standard with minimum climb of 500' per NM to 680.



DEPARTURE ROUTE DESCRIPTION

TAKEOFF RWY 18: Climb heading 175° to 680 for RADAR vectors to KNTKY, thence

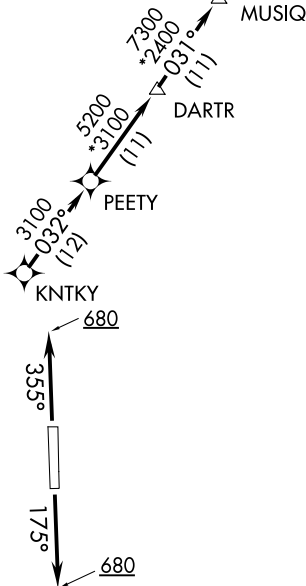
TAKEOFF RWY 36: Climb heading 355° to 680 for RADAR vectors to KNTKY, thence

. . . . on track 032° to PEETY, then on track 032° to DARTR, then on track 031° to MUSIQ, then on track 031° to CLAVN, then on track 031° to VELCO, then on track 031° to ENJOY, then on track 031° to LURIC, then on (transition). Maintain ATC assigned altitude. Expect filed altitude 10 minutes after departure.

HAWES TRANSITION (LURIC7.HAWES)

ORRTH TRANSITION (LURIC7.ORRTH)

NOTE: Chart not to scale.



SC-5, 09 SEP 2021 to 07 OCT 2021

SC-5, 09 SEP 2021 to 07 OCT 2021

LURIC SEVEN DEPARTURE (RNAV)

(LURIC7.LURIC) 25APR19

HOUSTON, TEXAS

HOUSTON EXEC (TME)